



Winds of Change

Blackwater Meadow Marina

£49,950.00

A 58ft 2006 Liverpool Boat Co. 4 berth traditional stern narrowboat.

This modern and cosy narrowboat would make the perfect floating home or holiday home on our wonderful canal network.

Painted in red with a cratch cover to the bow, Winds of Change comes with a Boat Safety Certificate, valid until February 2029.

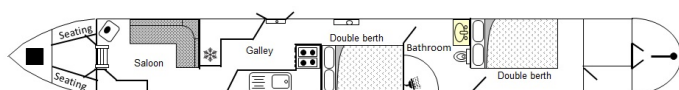
Entering from the stern is the first of two bedroom cabins. This cabin has a double bed with cupboard storage.

Next along is the walk-through bathroom, making optimum use of the space available and conveniently situated between the two bedrooms. This is fitted with a pump-out toilet, wash basin and a large tiled shower cubicle.

The galley follows this. This is sleekly designed in warm wood tones and comes equipped with an oven, 4 burner hob, grill sink and drainer and an undercounter fridge. There is plenty of cupboard storage and worktop space. There is also a side hatch for extra ventilation.

The final area is an open plan saloon area with L shaped sofa, storage cupboards and a Bubble oil fired stove. Steps lead up to the bow deck where there is bench-seating to either side. Winds of Change has central heating radiators throughout.

For enquiries or appointments to view, please contact Blackwater Meadow Marina on 01691 624391.



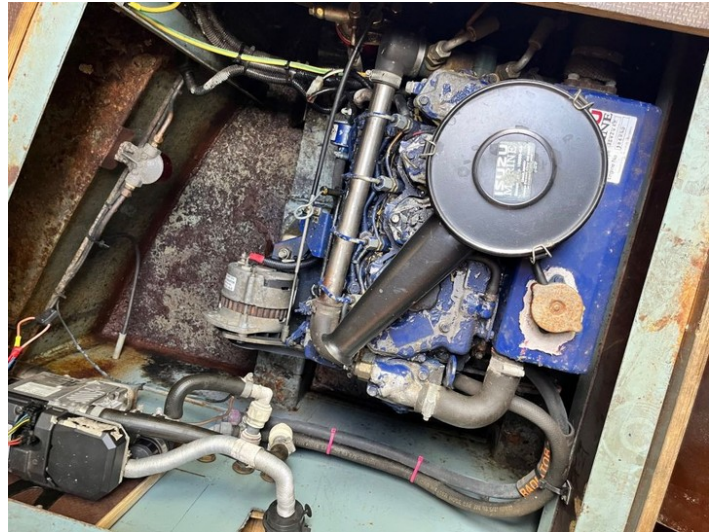
| | |
|------------------------|-----------------------------------|
| Overall length | 58 feet |
| Beam | 6 feet 10 inches |
| Draft | 2 feet |
| Headroom | 6 feet 3 inches |
| No. of berths | 4 |
| Style of stern | |
| BSS certificate expiry | -- |
| Built | In 2006 by Liverpool Boat Company |
| Fitout | In 2006 by Liverpool Boat Company |
| Base | Steel 10mm |
| Hull | Steel 6mm |
| Cabin | Steel 4mm |
| Engine | Isuzu 42HP |
| Gearbox | Newage Transmissions Ltd PRM150D2 |

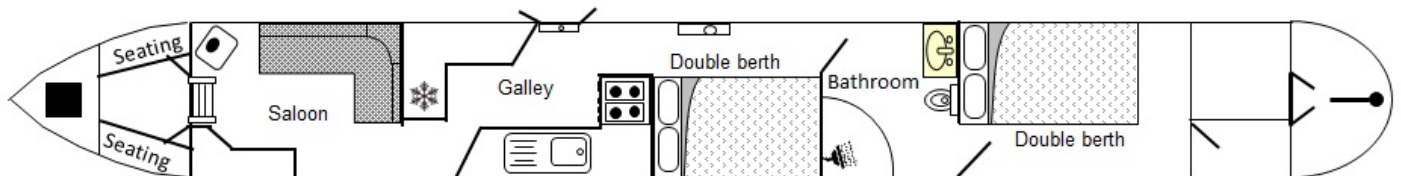




Scan the QR code to view online









General

General

| | |
|------------------------|-----------------------------------|
| Name | Winds of Change |
| BW index number | 513650 |
| Safety certificate | YES |
| BSS certificate expiry | -- |
| BSS certificate number | BSSER-497331/25 |
| Built | In 2006 by Liverpool Boat Company |
| Location | Blackwater Meadow Marina |
| Price | £49,950.00 |

Berths

| | |
|--------------------|----|
| No. of Berths | 4 |
| Double beds | 2 |
| Double beds (temp) | -- |
| Single beds | -- |
| Single beds (temp) | -- |

Size

| | |
|----------------|------------------|
| Overall length | 58 feet |
| Overall beam | 6 feet 10 inches |
| Overall draft | 2 feet |
| Style of stern | |

Structure

Manufacturer

| | |
|--------------|---------------------------|
| Manufacturer | Liverpool Boat Company |
| Hull ID No. | LBC03361/ GB-RYA00738A606 |
| Build date | 2006 |

Material

| | |
|------------|-------|
| Base | Steel |
| Hull | Steel |
| Cabin side | Steel |
| Roof | Steel |

Original steel thickness

| | |
|-------|------|
| Base | 10mm |
| Hull | 6mm |
| Cabin | 4mm |

Hull blacking

| | |
|--------------------|--------------------------|
| Last hull blacking | 2024-10 |
| Where | Blackwater Meadow Marina |

Anodes

| | |
|---------------|-------|
| Fitted | YES |
| Date fitted | -- |
| Size | 1.5kg |
| No. of anodes | 4 |





Running gear

Engine

| | |
|--------------------|-----------|
| Make | Isuzu |
| Model | 42HP |
| Year | 2006 |
| Fuel | Diesel |
| Cooling | Skin Tank |
| Hours | -- |
| Last serviced date | -- |
| Last serviced by | -- |

Gearbox

| | |
|----------------|----------------------------|
| Make | Newage Transmissions Ltd |
| Model | PRM150D2 |
| Year | -- |
| Reduction | 2.1 |
| Coupling | Vetus Watherlube |
| Shaft diameter | 30mm |
| Propellor size | 17X3" R/H Rotation 3 Blade |

Capacities

| | |
|----------|------------|
| Fuel | 135 litres |
| Water | 545 litres |
| Gas type | Propane |

| | |
|----------------------|------|
| No. of gas cylinders | 1 |
| Gas cylinder size | 13kg |

Interior

Fitted

| | |
|-------------|------------------------|
| Fitted by | Liverpool Boat Company |
| Date fitted | 2006 |

Materials used

| | |
|-------------|---------|
| Floor | Ply |
| Hull sides | Ply |
| Cabin sides | Ply |
| Deckhead | Ply |
| Bulkheads | Ply |
| Fittings | Various |





Equipment

In the galley

| | |
|--------------|----------------------------------|
| Cooker type | Freestanding oven, hob and grill |
| Cooker model | DIT 500 |
| Fridge type | Under counter 12v |
| Fridge model | Smeg |
| Other | -- |

Heating

| | |
|---------------|-------------------------------|
| Type | Central heating |
| Make | Webasto |
| Model | Thermo Top C |
| Fuel | Diesel |
| Other remarks | Calorifier 64litres Twin Coil |

Hot water

| | |
|--------------------|-------------------|
| Type | Engine/webasto |
| Make | -- |
| Model | -- |
| Fuel | Diesel |
| Other remarks | -- |
| Additional heating | Bubble oil stove. |

In the bathroom

| | |
|----------------------|-----------|
| Bath | -- |
| Shower | Yes |
| Hip bath | -- |
| Basin | Yes |
| Toilet type | Pump out |
| Toilet make | Marin |
| Toilet model | Macerator |
| Toilet tank capacity | -- |
| Toilet remarks | -- |

Electrical systems

| | |
|-----------------------------|---------------------------------|
| DC voltage | 12v |
| No. of batteries (start) | 1 |
| No. of batteries (domestic) | 2 |
| Split charging | True |
| Other | Victron blue smart ip22 charger |

240 volt electrical systems

| | |
|------------------|-----------------------------|
| Inverter make | -- |
| Inverter rating | -- |
| Generator make | n/a |
| Generator rating | -- |
| Shoreline | YES |
| Other | Galvanic isolator Sterling. |

Additional information

--

