



## This England

Hilpertown Marina

£43,950.00

A 55ft 2000 SW Durham Steel Craft 6 Berth cruiser stern narrowboat

Available November 2025.

'This England' is a 55-foot narrowboat with a beam of 6 feet 10 inches, built by Southwest Durham and previously part of the CLC hire fleet. Designed with the highly sought-after reverse layout, she offers a well-thought-out and spacious interior.

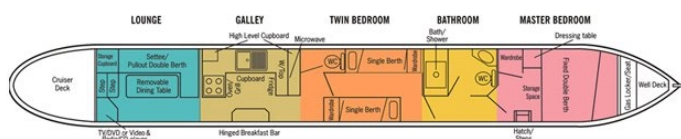
Entry is through the stern steps, leading directly into a comfortable lounge area that sets the tone for relaxed living aboard. The galley follows, equipped with a fridge, oven, and stove—ideal for preparing meals on the move.

Continuing forward, there is a twin berth cabin offering flexible sleeping arrangements, followed by a well-appointed bathroom. At the bow lies the master bedroom, complete with a side hatch that allows for extra light and ventilation, as well as a pleasant view of the surroundings.

'This England' blends practicality with comfort, making her a welcoming choice for both short breaks and longer stays on the water.

'This England' will be available at the end of the season in November 2025.

To arrange a viewing around customer hire please contact Hilpertown Marina on 01225 765243



Overall length	55 feet
Beam	6 feet 10 inches
Draft	--
Headroom	6 feet 4 inches
No. of berths	6
Style of stern	
BSS certificate expiry	--
Built	SW Durham Steelcraft Ltd
Fitout	
Base	
Hull	
Cabin	
Engine	Beta Marine 38
Gearbox	PRM 150

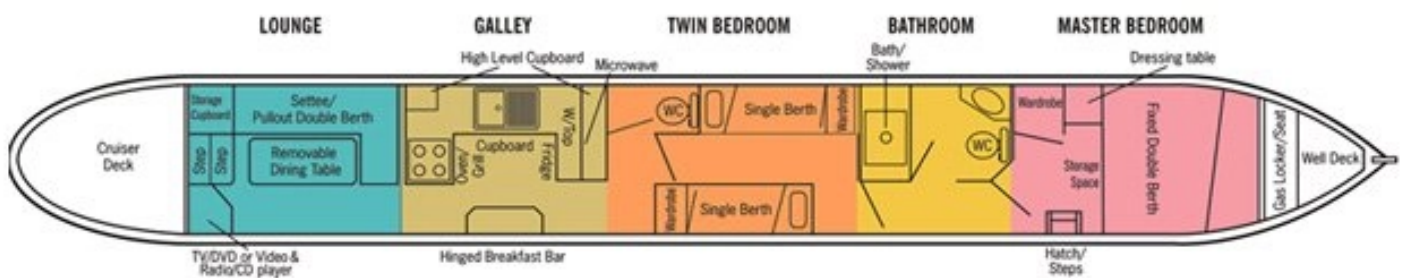
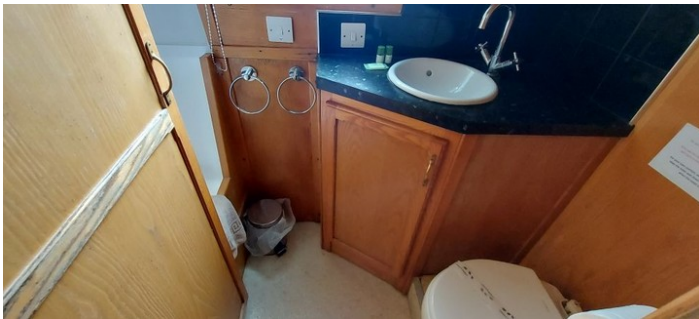




---

Scan the QR code to view online







## General

### General

Name	This England
BW index number	511868
Safety certificate	YES
BSS certificate expiry	--
BSS certificate number	BSSER-447812/22
Built	SW Durham Steelcraft Ltd
Location	Hilperton Marina
Price	£43,950.00

### Berths

No. of Berths	6
Double beds	1
Double beds (temp)	1
Single beds	2
Single beds (temp)	--

### Size

Overall length	55 feet
Overall beam	6 feet 10 inches
Overall draft	--
Style of stern	

## Structure

### Manufacturer

Manufacturer	SW Durham Steelcraft Ltd
Hull ID No.	GB-SDSCA338C300
Build date	--

### Original steel thickness

Base	Steel
Hull	Steel
Cabin	Steel

### Anodes

Fitted	YES
Date fitted	2024
Size	2.5kg
No. of anodes	4

### Material

Base	--
Hull	--
Cabin side	--
Roof	--

### Hull blacking

Last hull blacking	01-2024
Where	Hilperton Marina



**Running gear****Engine**

Make	Beta Marine
Model	38
Year	2021
Fuel	Diesel
Cooling	Skin Tank
Hours	--
Last serviced date	04-2025
Last serviced by	Hilpert Marina

**Gearbox**

Make	PRM
Model	150
Year	--
Reduction	2:1
Coupling	--
Shaft diameter	1.5"
Propellor size	17x13

**Capacities**

Fuel	--
Water	--
Gas type	Propane

No. of gas cylinders	4
Gas cylinder size	13

**Interior****Fitted**

Fitted by	--
Date fitted	--

**Materials used**

Floor	Carpet and Lino
Hull sides	Wood
Cabin sides	Wood
Deckhead	--
Bulkheads	--
Fittings	--





## Equipment

### In the galley

Cooker type	Gas Oven and Grill
Cooker model	Thetford RIR405W
Fridge type	Under Counter Fridge
Fridge model	Lec
Other	Three Burner Gas Hob Thetford Topline 931

### Heating

Type	Gas
Make	Alde Compact
Model	3010
Fuel	Gas
Other remarks	--

### Hot water

Type	Calorifier
Make	--
Model	--
Fuel	--
Other remarks	--
Additional heating	--

### In the bathroom

Bath	--
Shower	Yes
Hip bath	Yes
Basin	--
Toilet type	Pump Out
Toilet make	--
Toilet model	--
Toilet tank capacity	--
Toilet remarks	2 Toilets

### Electrical systems

DC voltage	12V
No. of batteries (start)	2 LA
No. of batteries (domestic)	4 LA
Split charging	--
Other	--

### 240 volt electrical systems

Inverter make	Victron INV/CHR Multiplus 13/3000
Inverter rating	3000W
Generator make	--
Generator rating	--
Shoreline	YES
Other	--

## Additional information

--

