



Sunflower

Alvechurch Marina

£10,000.00

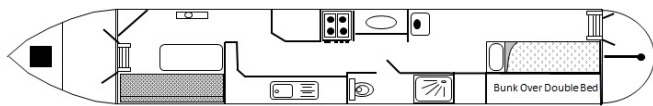
A 42ft John South 5 berth cruiser stern narrowboat.

Sunflower is a narrowboat with a well-considered layout that makes excellent use of the available space. Entering from the stern, three steps lead down into the first cabin, which is configured as a bedroom. This cabin offers sleeping accommodation for up to three people, with a fixed double bed and a single bunk above. The room is fitted with both a radiator and a stove, the latter adding character as well as providing cosy warmth during cooler months. Additional shelving provides practical storage for personal belongings and everyday essentials.

Moving forward through the boat, you enter the bathroom area. The bathroom is fitted with a shower and toilet, while the hand basin is conveniently positioned just outside the main bathroom compartment, helping to maximise the available space and practicality on board.

The next section of the boat is the galley, which is equipped for everyday living and cruising. It includes a gas cooker, sink, shelving, and cupboard space for kitchen essentials and provisions. A water heater is also fitted, ensuring hot water is readily available. Windows on both sides of the galley allow plenty of natural light to flood the space, creating a bright and welcoming atmosphere.

Continuing through the boat, you enter the saloon, a comfortable and inviting living area designed for relaxation. This space features a sofa bench which, when used with the table and stools, can be converted into an additional double bed. A corner storage unit provides practical space for belongings, with room on top for a television. Double bow doors open out onto the



Overall length	42 feet
Beam	6 feet 10 inches
Draft	--
Headroom	--
No. of berths	5
Style of stern	
BSS certificate expiry	--
Built	In 1983 by John South
Fitout	In 1983 by Starline Narrow Boats
Base	steel
Hull	steel
Cabin	steel
Engine	Lister ST 2
Gearbox	Hurth





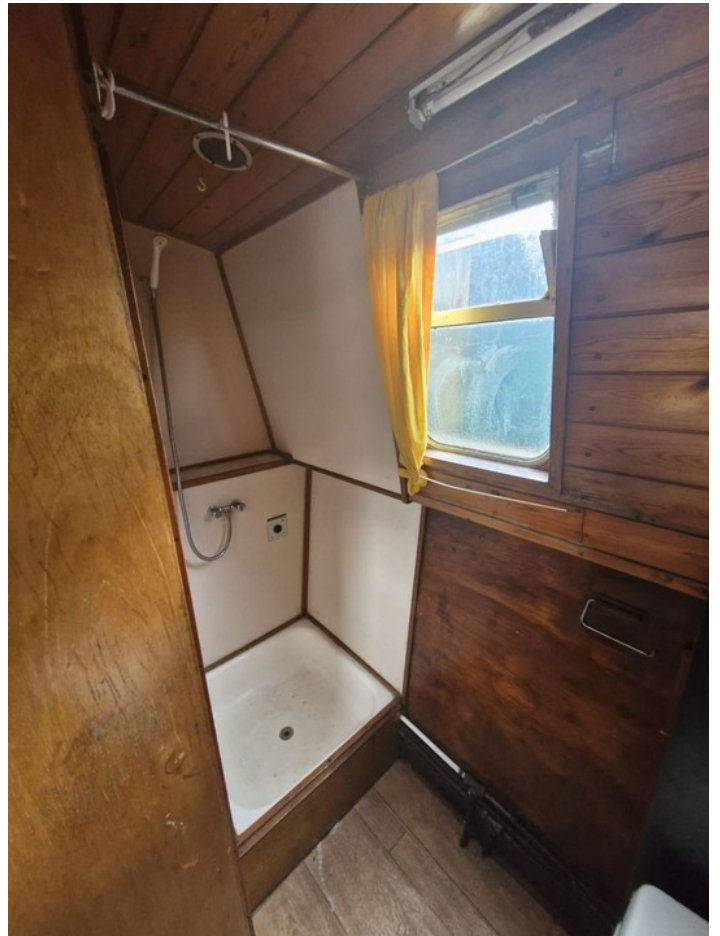
bow deck, creating a pleasant outdoor area where you can enjoy lovely views along the canal.

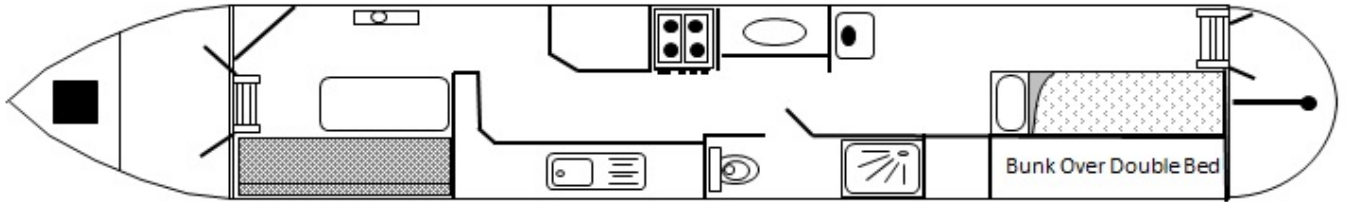
The Boat Safety Certificate is valid until 25th November 2027.

If you wish to arrange a viewing or for more information please call Alvechurch on 0121 445 1133.

Scan the QR code to view online







**General**

General

Name	Sunflower
BW index number	75249
Safety certificate	YES
BSS certificate expiry	--
BSS certificate number	BSSER-41742/23
Built	In 1983 by John South
Location	Alvechurch Marina
Price	£10,000.00

Berths

No. of Berths	5
Double beds	1
Double beds (temp)	1
Single beds	1
Single beds (temp)	--

Size

Overall length	42 feet
Overall beam	6 feet 10 inches
Overall draft	--
Style of stern	

Structure

Manufacturer

Manufacturer	John South
Hull ID No.	--
Build date	1983

Original steel thickness

Base	--
Hull	--
Cabin	--

Anodes

Fitted	YES
Date fitted	2025
Size	--
No. of anodes	8

Material

Base	steel
Hull	steel
Cabin side	steel
Roof	steel

Hull blacking

Last hull blacking	2025-06
Where	Droitwich Boat yard



**Running gear****Engine**

Make	Lister
Model	ST 2
Year	1983
Fuel	diesel
Cooling	air
Hours	--
Last serviced date	2021
Last serviced by	Robert Bird

Gearbox

Make	Hurth
Model	--
Year	--
Reduction	--
Coupling	--
Shaft diameter	--
Propellor size	--

Capacities

Fuel	--
Water	--
Gas type	--

No. of gas cylinders	2
Gas cylinder size	--

Interior**Fitted**

Fitted by	Starline Narrow Boats
Date fitted	1983

Materials used

Floor	wood
Hull sides	wood
Cabin sides	wood
Deckhead	wood
Bulkheads	wood
Fittings	wood





Equipment

In the galley

Cooker type	gas
Cooker model	--
Fridge type	gas/battery
Fridge model	--
Other	--

Heating

Type	Wood stove
Make	--
Model	--
Fuel	--
Other remarks	Has a gas boiler not working

Hot water

Type	Palomo
Make	--
Model	--
Fuel	gas
Other remarks	--
Additional heating	--

In the bathroom

Bath	no
Shower	yes
Hip bath	--
Basin	--
Toilet type	cartridge
Toilet make	--
Toilet model	--
Toilet tank capacity	--
Toilet remarks	--

Electrical systems

DC voltage	12v
No. of batteries (start)	1
No. of batteries (domestic)	1
Split charging	--
Other	--

240 volt electrical systems

Inverter make	--
Inverter rating	--
Generator make	--
Generator rating	--
Shoreline	NO
Other	--

Additional information

--

