

Overall length	58 feet
Beam	6 feet 10 inches
Draft	--
Headroom	--
No. of berths	6
Style of stern	
BSS certificate expiry	--
Built	In 1999 by Pat Buckle Boats
Fitout	In 1999 by Pat Buckle Boats
Base	Steel
Hull	Steel





Cabin	Steel
Engine	Izuzu 42
Gearbox	--

Sundowner

Blackwater Meadow Marina

£46,000.00

A 58ft 1999 Pat Buckle Boats 6 berth semi-traditional stern narrowboat.

Introducing Sundowner, a well presented boat with a sleek and modern grey, black, and red-lined exterior that stands out on the water. Inside you will find all you need for an adventure on the waterways.

Stepping inside, you are welcomed into a thoughtfully designed double fixed bedroom, complete with overhead storage and the added luxury of a cleverly hidden en-suite.

Moving forward, the main bathroom is generously sized and well equipped, featuring a good sized bath with shower head, toilet, and wash basin—ideal for relaxed living aboard.

The next cabin houses a smart U-shaped galley, fitted with a four-burner hob, sink with drainer, gas cooker with grill, fridge, microwave, and dedicated shelving for cutlery and storage. This space overlooks the dinette area, where an L-shaped seating arrangement provides a comfortable dining space and converts into an additional double bed.

At the bow, the saloon offers a warm and inviting atmosphere, featuring a stove for cosy evenings and two generously sized armchairs that convert into two single beds. The forward doors open out onto the bow, creating a full-height picture window of the surrounding scenery and allowing an abundance of natural light to flood the interior—perfect for enjoying the brighter summer months.

A Boat Safety Certificate is valid until July 2027.





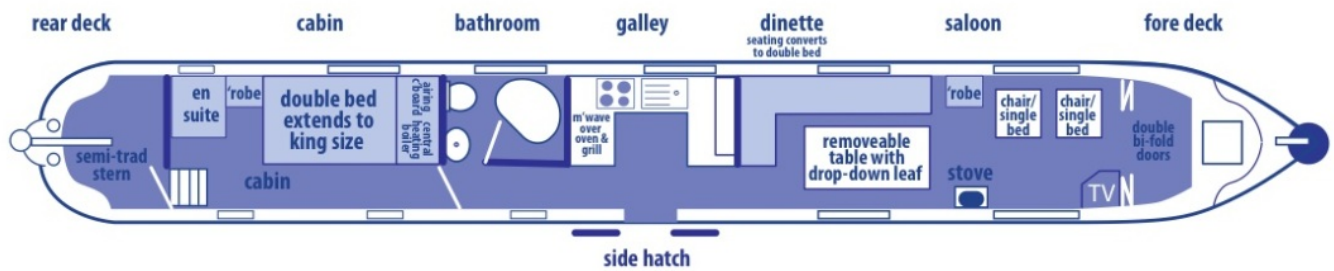
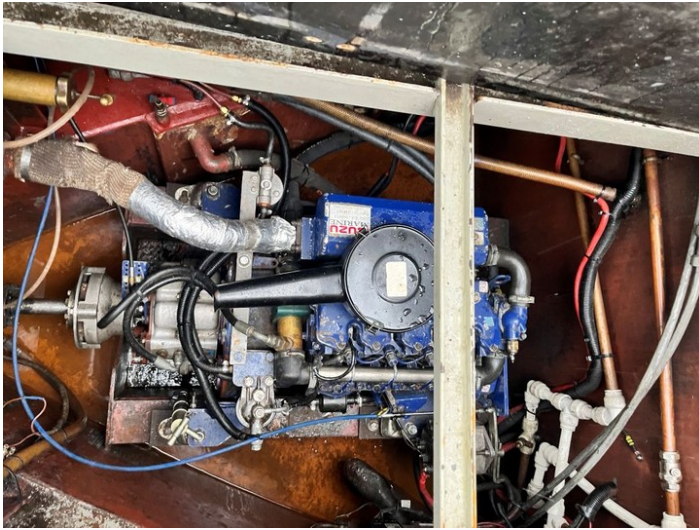
If you would like to arrange a viewing or for further questions please call Blackwater Meadow Marina on 01691 624391.

Scan the QR code to view online











General

General

Name	Sundowner
BW index number	503970
Safety certificate	YES
BSS certificate expiry	--
BSS certificate number	BSSER-462646
Built	In 1999 by Pat Buckle Boats
Location	Blackwater Meadow Marina
Price	£46,000.00

Berths

No. of Berths	6
Double beds	1
Double beds (temp)	1
Single beds	--
Single beds (temp)	2

Size

Overall length	58 feet
Overall beam	6 feet 10 inches
Overall draft	--
Style of stern	

Structure

Manufacturer

Manufacturer	Pat Buckle Boats
Hull ID No.	--
Build date	1999

Original steel thickness

Base	--
Hull	--
Cabin	--

Anodes

Fitted	YES
Date fitted	--
Size	--
No. of anodes	--

Material

Base	Steel
Hull	Steel
Cabin side	Steel
Roof	Steel

Hull blacking

Last hull blacking	2024/11
Where	Blackwater Meadow Marina



**Running gear****Engine**

Make	Izuzu
Model	42
Year	2013
Fuel	Diesel
Cooling	Skin tank
Hours	13500
Last serviced date	--
Last serviced by	--

Gearbox

Make	--
Model	--
Year	--
Reduction	--
Coupling	--
Shaft diameter	--
Propellor size	--

Capacities

Fuel	360 litres
Water	450 litres
Gas type	Propane

No. of gas cylinders	2
Gas cylinder size	13kg

Interior**Fitted**

Fitted by	Pat Buckle Boats
Date fitted	1999

Materials used

Floor	Chipboard
Hull sides	Ply
Cabin sides	Ply
Deckhead	Ply
Bulkheads	Ply
Fittings	--





Equipment

In the galley

Cooker type	Built in
Cooker model	Thetford midi prima mk3
Fridge type	Under counter
Fridge model	shoreline
Other	--

Heating

Type	Central Heating
Make	Webasto
Model	--
Fuel	Diesel
Other remarks	Calorifier fitted heated by heating and engine

Hot water

Type	Calorifier
Make	--
Model	--
Fuel	--
Other remarks	--
Additional heating	Stove in the saloon

In the bathroom

Bath	Yes
Shower	Yes
Hip bath	no
Basin	Yes
Toilet type	Pump out
Toilet make	Thetford
Toilet model	traveller
Toilet tank capacity	--
Toilet remarks	--

Electrical systems

DC voltage	12v
No. of batteries (start)	1
No. of batteries (domestic)	3
Split charging	True
Other	Dual Alternator

240 volt electrical systems

Inverter make	Victron Multiplus
Inverter rating	2kva
Generator make	--
Generator rating	--
Shoreline	YES
Other	--

Additional information

--

