



## SQ II

Kings Orchard Marina

**£70,000.00**

A 57ft 2012 Jonathan Wilson 2 berth semi-traditional stern hybrid narrowboat.

SQ II is a beautifully presented hybrid powered narrowboat, perfect for couples for holidays or as a floating home.

Painted in an eye-catching orange livery with stunning brass detail, this boat has a contrasting black cratch cover at the bow and pram cover over the seating of the semi traditional stern.

Upon entering the boat from the stern, you enter the rear cabin which has a neat storage system. The double bedroom follows this.

Separated by sliding doors is the walk through bathroom. This is fitted with a glass shower cubicle, cassette toilet and a vanity unit.

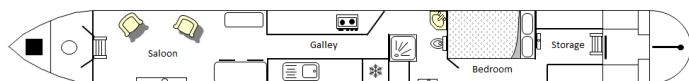
An attractive galley follows this. This comes equipped with a 2 burner hob, fridge, microwave oven, washing machine and a sink and drainer unit. There is also plenty of worktop space and storage.

The last cabin along is the saloon. This comes with a table and stools for dining and 2 easy chairs.

SQ II has central heating throughout and her full warm wooden interior adds to the cosy feel.

SQ II comes with a Boat Safety Certificate valid until February 2028.

The boat is powered by a 3-phase AC induction motor from EVS Ltd, originally designed for industrial applications like forklifts. Paired with a Crowther 18 x 18 propeller and a Sevcon (now Borg-Warner) 48V Gen 4 controller, this system delivers smooth and efficient



Overall length	57 feet
Beam	6 feet 10 inches
Draft	2 feet 2 inches
Headroom	--
No. of berths	2
Style of stern	
BSS certificate expiry	--
Built	In 2012 by Jonathan Wilson
Fitout	In 2013 by Audlem Boats
Base	Steel 10mm
Hull	Steel 6mm
Cabin	Steel 4mm
Engine	Electric motor
Gearbox	--





electric propulsion. The motor is powered by a 48V lead-acid battery bank (930Ah), which was replaced in 2021, ensuring continued reliability.

The battery can be recharged through:

Shoreline Power – When docked, for easy charging.

On-Board Beta Marine 11kVA Generator – A diesel-powered backup that ensures continuous operation when cruising.

Victron Inverter System – Manages power distribution efficiently, providing 240V mains supply from the shoreline, generator, or battery as needed.

Solar Support for 12V Systems – A small solar panel keeps the domestic and starter batteries charged. While the main battery bank doesn't currently utilize solar, advancements in solar technology could make future integration possible.

This hybrid system allows for half a day of electric cruising, typically discharging the battery to about 70%. The generator is then engaged, recharging the battery while continuing to power the boat. By the end of the day, the battery is nearly full, requiring just an hour of extra charging after stopping. This setup ensured a self-sufficient journey without any reliance on shoreline power.

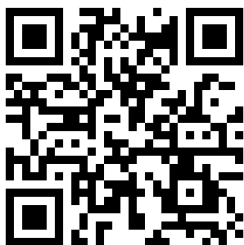
The battery also retains charge exceptionally well—when left fully charged, it loses only 2-3% over six weeks, making it ideal for extended mooring periods.

With the ability to cruise on electric power for hours each day, fuel consumption is significantly lower than traditional diesel-only boats. The generator uses only 2 to 2.5 liters of diesel per hour, comparable to standard boat engines, but the hybrid system reduces overall fuel costs and environmental impact.

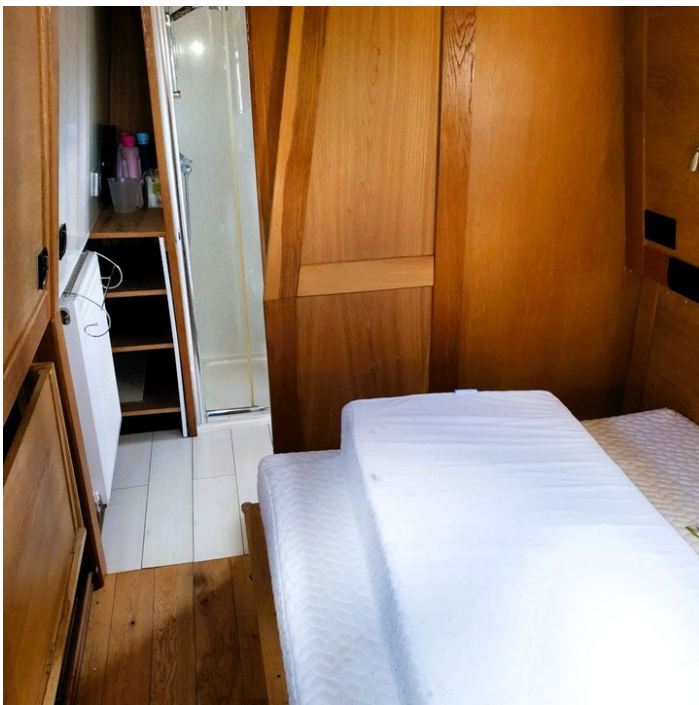
This proven and efficient hybrid setup delivers quiet, low-cost cruising while ensuring range and reliability, making it an excellent choice for long-term boating adventures.

Viewing of this boat comes highly recommended. To arrange, or for further information, please contact Kings Orchard Marina on 01543 433608.

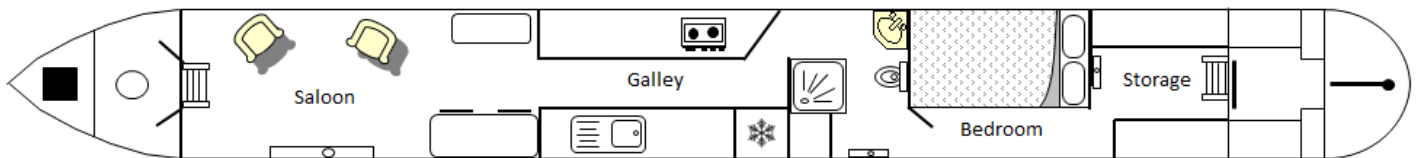
Scan the QR code to view online











**General****General**

Name	SQ II
BW index number	520746
Safety certificate	YES
BSS certificate expiry	--
BSS certificate number	BSSER-474966/24
Built	In 2012 by Jonathan Wilson
Location	Kings Orchard Marina
Price	£70,000.00

**Berths**

No. of Berths	2
Double beds	1
Double beds (temp)	--
Single beds	--
Single beds (temp)	--

**Size**

Overall length	57 feet
Overall beam	6 feet 10 inches
Overall draft	2 feet 2 inches
Style of stern	

**Structure****Manufacturer**

Manufacturer	Jonathan Wilson
Hull ID No.	JWLTD000254/11
Build date	2012

**Original steel thickness**

Base	10mm
Hull	6mm
Cabin	4mm

**Anodes**

Fitted	YES
Date fitted	2023
Size	--
No. of anodes	4

**Material**

Base	Steel
Hull	Steel
Cabin side	Steel
Roof	Steel

**Hull blacking**

Last hull blacking	2023/10
Where	Droitwich Spa Marina





## Running gear

### Engine

Make	Electric motor
Model	--
Year	--
Fuel	--
Cooling	--
Hours	--
Last serviced date	--
Last serviced by	--

### Gearbox

Make	--
Model	--
Year	--
Reduction	--
Coupling	--
Shaft diameter	--
Propellor size	--

## Capacities

Fuel	160 litres
Water	900 litres
Gas type	Propane

No. of gas cylinders	2
Gas cylinder size	--

## Interior

### Fitted

Fitted by	Audlem Boats
Date fitted	2013

### Materials used

Floor	Oak Sealed
Hull sides	Oak Ply
Cabin sides	Oak Ply
Deckhead	Oak ply
Bulkheads	Oak Ply
Fittings	Various





## Equipment

### In the galley

Cooker type	CDA Cooker
Cooker model	--
Fridge type	Under counter
Fridge model	Indesit 240v
Other	--

### Heating

Type	Central heating radiators
Make	Eberspacher-fitted 2020
Model	Hydronic
Fuel	Diesel
Other remarks	Under floor heating

### Hot water

Type	Calorifier
Make	--
Model	--
Fuel	--
Other remarks	--
Additional heating	--

### In the bathroom

Bath	--
Shower	Yes
Hip bath	--
Basin	Yes
Toilet type	Porta potti
Toilet make	Thetford
Toilet model	'Elsan chemical' 365
Toilet tank capacity	20 litres
Toilet remarks	Toilet newly fitted 2022.

### Electrical systems

DC voltage	12v
No. of batteries (start)	1
No. of batteries (domestic)	1
Split charging	--
Other	Beta Diesel Generator

### 240 volt electrical systems

Inverter make	Victron
Inverter rating	--
Generator make	--
Generator rating	--
Shoreline	YES
Other	The boat benefits from a 25% CRT licence fee due to the boat been electrically operated





---

**Additional information**

---

