



# Presita Roso

New Mills Marina

£30,000.00

A 33ft 1998 Bridgewater Boats 2 berth cruiser stern narrowboat.

Presita Roso is now ready for a new venture or for becoming a lovely home for holidays afloat.

The exterior was painted in 2023, and benefits from covers at both stern and bow. A new BSS certificate was issued at the same time, which is valid until 2027.

A side door leads from the stern to the interior, where the first cabin you encounter is the bathroom, containing a cassette toilet, washbasin, shower cubicle with curtain and storage space.

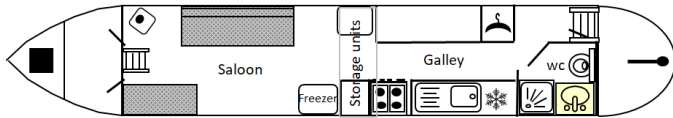
The centre of the boat is currently laid out as a comprehensive cooking and working space with worktops to either side, fridge, oven, sink and draining board, and concealed storage racks which slide out to provide lots of room for kitchen equipment.

The saloon is furnished in calming grey tones with carpeted walls, a double sofa bed, removable dining table, additional seating next to the bow and a solid fuel stove.

Double doors lead out to the covered bow area.

As a Broker, our understanding is that this vessel should have been built and correctly CE marked to satisfy the requirements of the Recreational Craft Regulations but no such proof has been provided.

You should satisfy yourself of any subsequent implications and are advised to seek further advice should you see fit as there could be implications for the future saleability or value of the vessel.



Overall length	33 feet
Beam	--
Draft	--
Headroom	--
No. of berths	2
Style of stern	
BSS certificate expiry	--
Built	In 1998 by Bridgewater Boatbuilders
Fitout	
Base	Steel
Hull	Steel
Cabin	Steel
Engine	Beta Marine K43975
Gearbox	PRM 3 cylinder



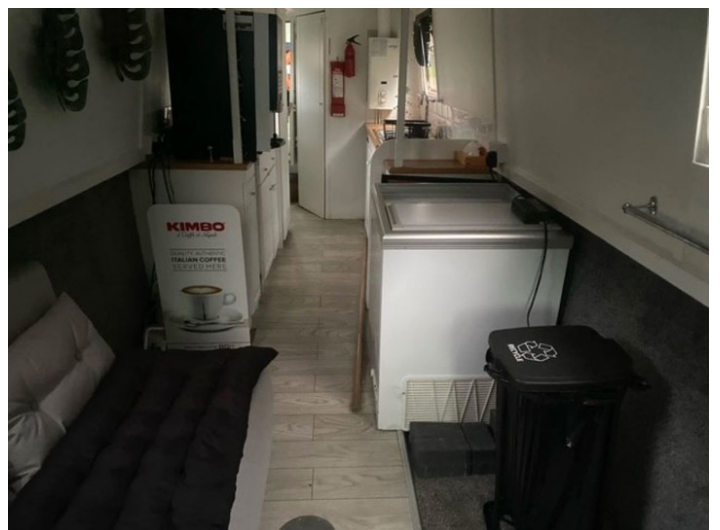


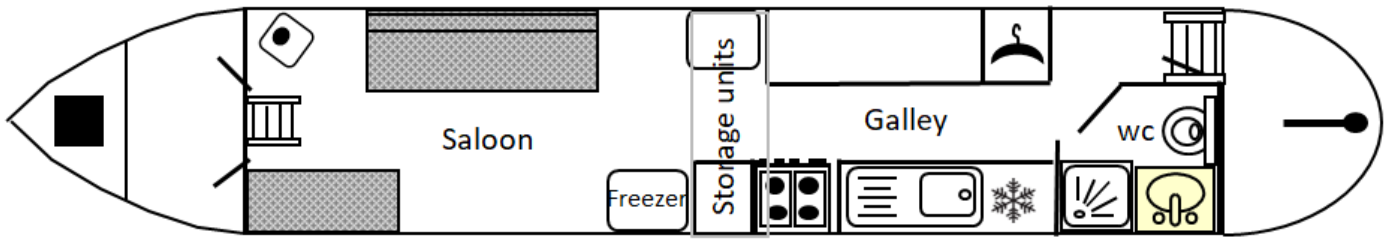
This boat is now reduced from its original asking price of £35,000!

To make an enquiry or arrange to view, please contact New Mills Marina on 01663 741310.

Scan the QR code to view online







**General****General**

Name	Presita Roso
BW index number	528275
Safety certificate	YES
BSS certificate expiry	--
BSS certificate number	BSSER-454014/23
Built	In 1998 by Bridgewater Boatbuilders
Location	New Mills Marina
Price	£30,000.00

**Berths**

No. of Berths	2
Double beds	--
Double beds (temp)	1
Single beds	--
Single beds (temp)	--

**Size**

Overall length	33 feet
Overall beam	--
Overall draft	--
Style of stern	

**Structure****Manufacturer**

Manufacturer	Bridgewater Boatbuilders
Hull ID No.	--
Build date	1998

**Original steel thickness**

Base	--
Hull	--
Cabin	--

**Anodes**

Fitted	YES
Date fitted	--
Size	--
No. of anodes	--

**Material**

Base	Steel
Hull	Steel
Cabin side	Steel
Roof	Steel

**Hull blacking**

Last hull blacking	--
Where	--





## Running gear

### Engine

Make	Beta Marine
Model	K43975
Year	2021
Fuel	Diesel
Cooling	--
Hours	142
Last serviced date	--
Last serviced by	--

### Gearbox

Make	PRM
Model	3 cylinder
Year	--
Reduction	--
Coupling	--
Shaft diameter	--
Propellor size	--

## Capacities

Fuel	--
Water	--
Gas type	--

No. of gas cylinders	--
Gas cylinder size	--

## Interior

### Fitted

Fitted by	--
Date fitted	--

### Materials used

Floor	--
Hull sides	--
Cabin sides	--
Deckhead	--
Bulkheads	--
Fittings	--



**Equipment****In the galley**

Cooker type	Freestanding oven, grill and hob
Cooker model	--
Fridge type	Under counter
Fridge model	--
Other	Freezer

**Heating**

Type	Solid fuel stove
Make	Boatman
Model	--
Fuel	--
Other remarks	--

**Hot water**

Type	--
Make	Morco Heater Maxi 2
Model	--
Fuel	--
Other remarks	--
Additional heating	--

**In the bathroom**

Bath	--
Shower	Yes
Hip bath	--
Basin	Yes
Toilet type	Cassette
Toilet make	--
Toilet model	--
Toilet tank capacity	--
Toilet remarks	--

**Electrical systems**

DC voltage	--
No. of batteries (start)	--
No. of batteries (domestic)	--
Split charging	--
Other	--

**240 volt electrical systems**

Inverter make	--
Inverter rating	--
Generator make	--
Generator rating	--
Shoreline	NO
Other	--

**Additional information**

--

