



Phoenicia Belle

Goytre Wharf **£59,500**

A 57ft 2003 Newport Narrowboats 4 berth cruiser stern narrowboat.

Phoenicia Belle is a charming narrowboat which is perfectly sized to comfortably accommodate couples and families alike.

The rear cabin of the boat is currently configured as a home office, however there are 2 single mattresses that the future owner request should you want to revert this area back into a bedroom.

The bathroom follows which is fitted with a shower, pump-out toilet and a wash basin.

The main bedroom has a fixed double berth with storage both under the bed and an overhead locker. A second full bathroom is immediately after.

The galley comes equipped with a gas cooker, microwave, fridge and a sink built into the worktop. There is also a good amount of cupboard storage.

The last cabin along is the saloon. This has a dinette which can be converted into a double bed when needed and is heated by a multi fuel stove.

In addition to the stove, this boat has central heating throughout.

To arrange a viewing or for further information, please contact Goytre Wharf on 01873 880516.

Additional information

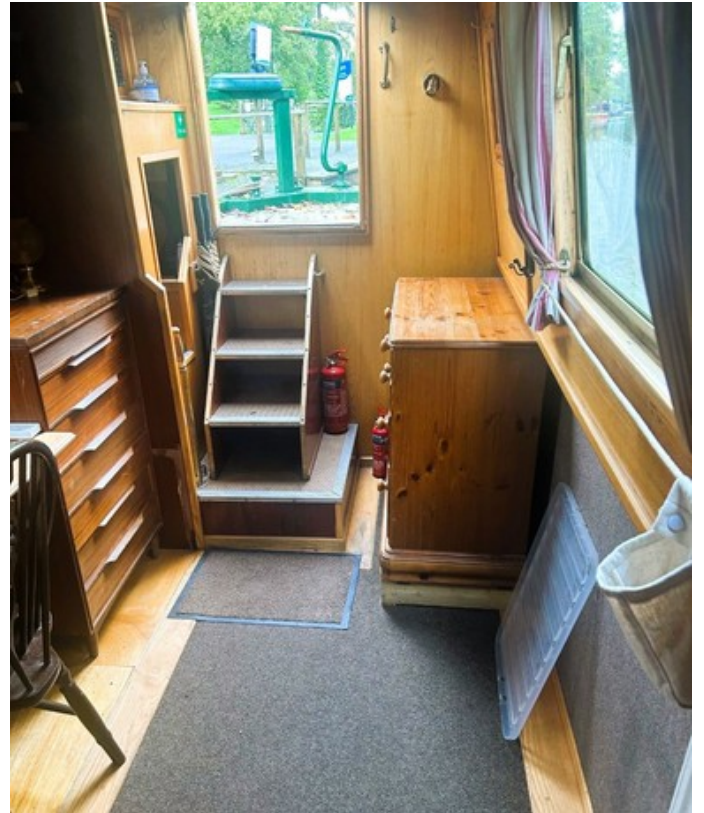
vendor has the mattress from rear cabin in storage should new owner request it.

Scan the QR code to view online



Overall length	57 feet
Beam	6 feet 10 inches
Draft	2 feet
Headroom	--
No. of berths	2
Style of stern	--
BSS certificate expiry	--
Built	In 2003 by Newport Narrowboats
Fitout	In 2003 by Beacon Park Boats
Base	Steel 10mm
Hull	Steel 6mm
Cabin	Steel 4mm
Engine	Shire Yanmar
Gearbox	PRM 150











General

General

Name	Phoenicia Belle
BW index number	510095
Safety certificate	NO
BSS certificate expiry	--
BSS certificate number	--
Built	In 2003 by Newport Narrowboats
Location	Goytre Wharf
Price	£59,500

Berths

No. of Berths	2
Double beds	1
Double beds (temp)	1
Single beds	--
Single beds (temp)	--

Size

Overall length	57 feet
Overall beam	6 feet 10 inches
Overall draft	2 feet
Style of stern	--

Structure

Manufacturer

Manufacturer	Newport Narrowboats
Hull ID No.	--
Build date	2003

Original steel thickness

Base	10mm
Hull	6mm
Cabin	4mm

Anodes

Fitted	YES
Date fitted	--
Size	--
No. of anodes	--

Material

Base	Steel
Hull	Steel
Cabin side	Steel
Roof	Steel

Hull blacking

Last hull blacking	2021-11
Where	Beacon Park Boats





Running gear

Engine

Make	Shire
Model	Yanmar
Year	--
Fuel	Diesel
Cooling	--
Hours	--
Last serviced date	2021
Last serviced by	Beacon Park Boats

Gearbox

Make	PRM 150
Model	--
Year	--
Reduction	--
Coupling	--
Shaft diameter	--
Propellor size	--

Capacities

Fuel	--
Water	--
Gas type	LPG

No. of gas cylinders	2
Gas cylinder size	16kg

Interior

Fitted

Fitted by	Beacon Park Boats
Date fitted	2003

Materials used

Floor	Carpet
Hull sides	--
Cabin sides	--
Deckhead	--
Bulkheads	Carpet
Fittings	--





Equipment

In the galley

Cooker type	Thetford
Cooker model	Caprice MK111
Fridge type	Dometic
Fridge model	--
Other	--

Heating

Type	Central Heating
Make	--
Model	--
Fuel	Diesel
Other remarks	Good working order

Hot water

Type	--
Make	--
Model	--
Fuel	Diesel
Other remarks	Runs from boiler above engine
Additional heating	Multifuel Stove - Villager - Located stern end of saloon

In the bathroom

Bath	--
Shower	2
Hip bath	--
Basin	2
Toilet type	Pumpout
Toilet make	Tecma
Toilet model	--
Toilet tank capacity	--
Toilet remarks	--

Electrical systems

DC voltage	240
No. of batteries (start)	1
No. of batteries (domestic)	3
Split charging	--
Other	--

240 volt electrical systems

Inverter make	Mastervolt Mass Combi 12-1200-60
Inverter rating	1200
Generator make	--
Generator rating	--
Shoreline	YES
Other	--

Other

Additional information

vendor has the mattress from rear cabin in storage should new owner request it.

