



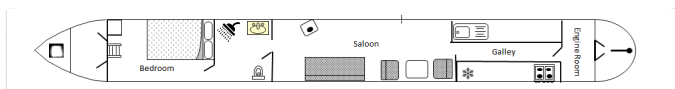
## Lucy Ella

Hilpertown Marina

£42,500.00

A 60ft 1995 John Pinder 2 berth cruiser Stern narrowboat.

This 60ft cruiser stern steel narrowboat, built in 1995 by John Pinder, is a fantastic vessel for comfortable living or long cruising adventures. It boasts a valid Boat Safety Certificate until 21st May 2028, giving peace of mind to its next owner. The hull was last blacked in 2022, with two new anodes fitted that same year. Powered by a Kubota 1995 engine, which was last serviced in March 2024, and paired with a Delta gearbox, this boat ensures smooth journeys on the water. The interior was thoughtfully refitted in Winter 2021/2022, providing a practical yet inviting living space.



Overall length	60 feet
Beam	6 feet 10 inches
Draft	--
Headroom	6 feet 6 inches
No. of berths	2
Style of stern	
BSS certificate expiry	--
Built	In 1995 by John Pinder
Fitout	In Winter 2021/22 by Previous Owner
Base	Steel 8/10
Hull	Steel 6
Cabin	Steel 4
Engine	Kubota DI703
Gearbox	Delta 20

Upon entering through the stern, you step into a well-equipped galley, featuring a Bush cooker and under-counter fridge, making meal preparation convenient. Moving forward, you enter the saloon, a cozy space fitted with a stove, perfect for relaxing and warming up on cooler days. Next, the bathroom includes a shower and cassette toilet, along with a cupboard for extra storage. At the bow, you'll find the bedroom, offering a peaceful retreat with a permanent double bed.

For added convenience, this narrowboat features a gas hot water system, ensuring warm showers whenever needed. It is also fitted with two solar panels, enhancing energy efficiency, along with an awning for the cockpit, providing shade and shelter when moored. Whether for weekend getaways or full-time cruising, this boat offers comfort, practicality, and a touch of character.

Lucy Ella is ready for her next adventure please contact Hilpertown Marina on 01225 765243 to arrange a viewing or for further information.





---

## Additional information

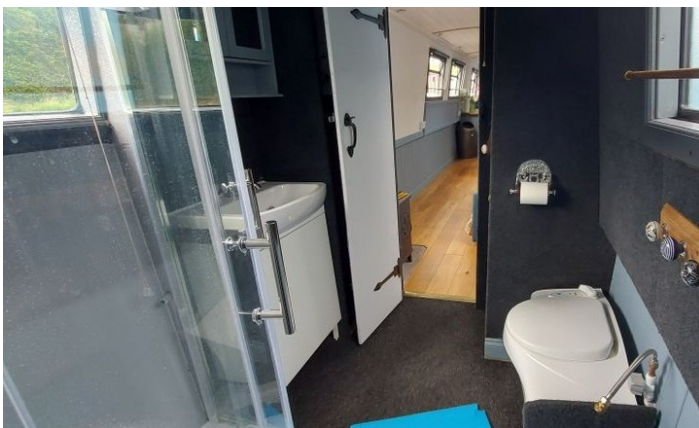
Awning For Cockpit  
2 x Solar Panels

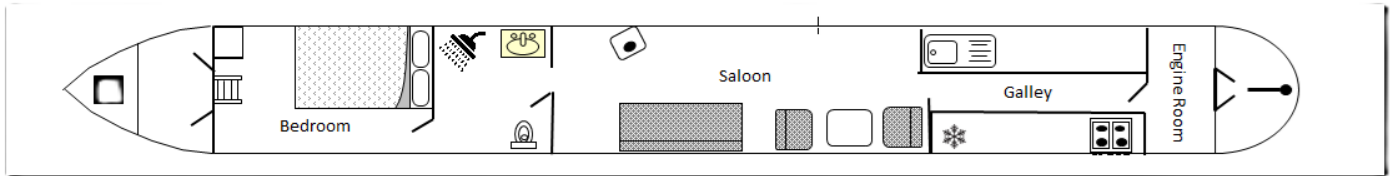
## Items excluded from sale

1 x Sofa Bed  
1 x Blue Mat  
1x Side Table

Scan the QR code to view online









## General

### General

Name	Lucy Ella
BW index number	54740
Safety certificate	YES
BSS certificate expiry	--
BSS certificate number	BSSER-481032/24
Built	In 1995 by John Pinder
Location	Hilpertown Marina
Price	£42,500.00

### Berths

No. of Berths	2
Double beds	1
Double beds (temp)	Possible
Single beds	--
Single beds (temp)	--

### Size

Overall length	60 feet
Overall beam	6 feet 10 inches
Overall draft	--
Style of stern	

## Structure

### Manufacturer

Manufacturer	John Pinder
Hull ID No.	BP60/83/12/94
Build date	1995

### Original steel thickness

Base	8/10
Hull	6
Cabin	4

### Anodes

Fitted	YES
Date fitted	2022
Size	--
No. of anodes	2

### Material

Base	Steel
Hull	Steel
Cabin side	Steel
Roof	Steel

### Hull blacking

Last hull blacking	2 Pack Epoxy 2022
Where	Devizes





**Running gear****Engine**

Make	Kubota
Model	DI703
Year	1995
Fuel	Diesel
Cooling	Skin Tank
Hours	--
Last serviced date	March 2024
Last serviced by	Self

**Gearbox**

Make	Delta
Model	20
Year	--
Reduction	--
Coupling	--
Shaft diameter	--
Propellor size	--

**Capacities**

Fuel	50
Water	800
Gas type	Propane

No. of gas cylinders	3
Gas cylinder size	13

**Interior****Fitted**

Fitted by	Previous Owner
Date fitted	Winter 2021/22

**Materials used**

Floor	Marine Ply Engineered Oak
Hull sides	Wood / Ply
Cabin sides	Wood / Ply
Deckhead	Wood / Ply
Bulkheads	Wood / Fibre Board
Fittings	--



**Equipment****In the galley**

Cooker type	Bush
Cooker model	AB56TBS
Fridge type	Under Counter
Fridge model	--
Other	--

**Heating**

Type	Solid Fuel
Make	Morso
Model	--
Fuel	Wood
Other remarks	Good Working Order

**Hot water**

Type	Gas
Make	--
Model	--
Fuel	Propane
Other remarks	Good Working Order
Additional heating	--

**In the bathroom**

Bath	--
Shower	Yes
Hip bath	--
Basin	Yes
Toilet type	Cassette
Toilet make	Porta-Poti
Toilet model	--
Toilet tank capacity	--
Toilet remarks	Gas Hot Water System

**Electrical systems**

DC voltage	12
No. of batteries (start)	1
No. of batteries (domestic)	3
Split charging	--
Other	2 Solar Panels

**240 volt electrical systems**

Inverter make	Edecoa 2000w
Inverter rating	--
Generator make	--
Generator rating	--
Shoreline	YES
Other	--

**Additional information**

Awning For Cockpit 2 x Solar Panels

