

Overall length	70 feet
Beam	6 feet 10 inches
Draft	--
Headroom	--
No. of berths	--
Style of stern	
BSS certificate expiry	--
Built	In 1997 by GT Boatbuilders, Stafford
Fitout	Project
Base	Steel 10





Hull	Steel 6
Cabin	Steel
Engine	Lister Petter LPW4
Gearbox	--

Lola

Springwood Haven Marina £26,500.00

A 70ft 1997 GT Boatbuilders Stafford traditional stern narrowboat.

Lola is a 70ft narrowboat with a traditional stern, built in 1997 by GT Boatbuilders of Stafford. Powered by a 1996 Lister Petter diesel engine, last serviced in 2025 by Marine Engine Service (Midlands) She offers a spacious interior layout that's ready for a complete refurbishment—ideal for someone looking to take on a full restoration project and create a truly bespoke space.

The bathroom is fitted with a bath and cassette toilet, and the galley includes a sink, oven, and stovetop. Three solar panels are installed, providing a good base for future off-grid capability once the electrical systems are restored.

She comes with a valid Boat Safety Scheme (BSS) certificate until 15th December 2025, offering a helpful head start for a new owner beginning the refit process.

This is a fantastic opportunity for a hands-on buyer looking to bring a traditional narrowboat back to life with their own style and vision.

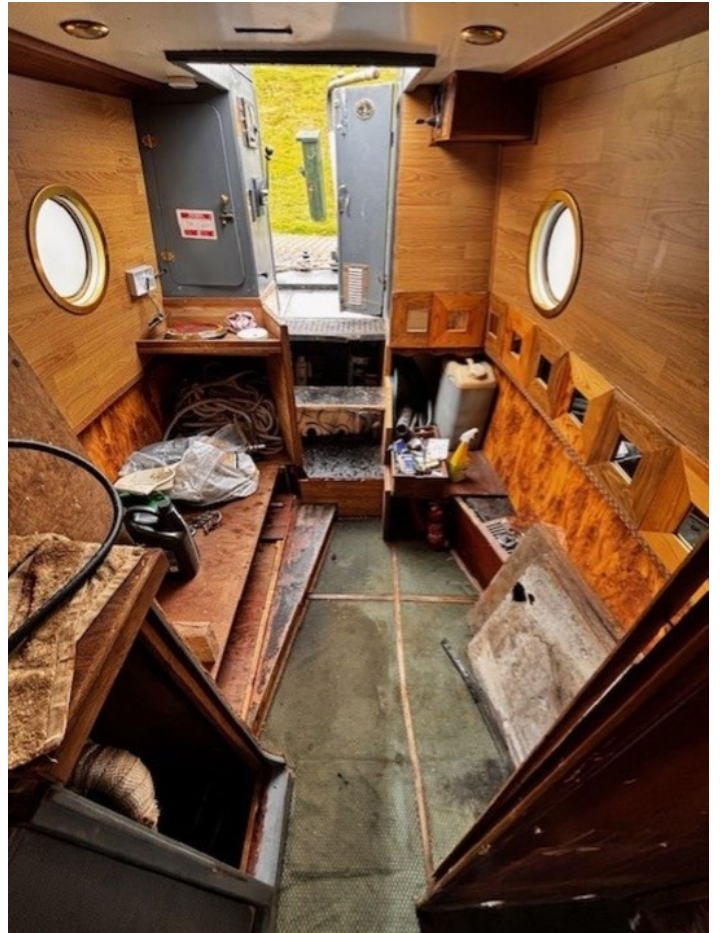
Lola is currently moored at Springwood Haven Marina. To find out more or to arrange a viewing, please contact the marina directly on 02476 393676.



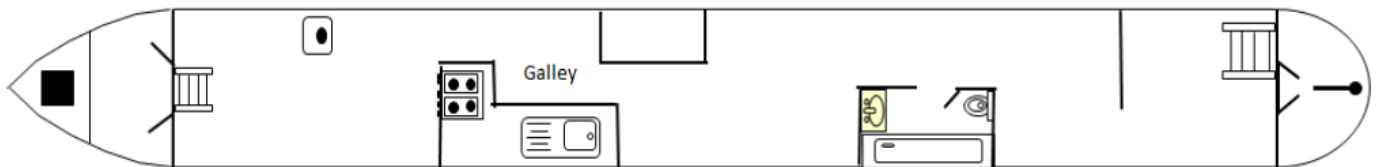


Scan the QR code to view online









**General****General**

Name	Lola
BW index number	502853
Safety certificate	NO
BSS certificate expiry	--
BSS certificate number	42607/21
Built	In 1997 by GT Boatbuilders, Stafford
Location	Springwood Haven Marina
Price	£26,500.00

Berths

No. of Berths	--
Double beds	--
Double beds (temp)	--
Single beds	--
Single beds (temp)	--

Size

Overall length	70 feet
Overall beam	6 feet 10 inches
Overall draft	--
Style of stern	

Structure**Manufacturer**

Manufacturer	GT Boatbuilders, Stafford
Hull ID No.	--
Build date	1997

Original steel thickness

Base	10
Hull	6
Cabin	--

Anodes

Fitted	YES
Date fitted	2022
Size	3.5
No. of anodes	8

Material

Base	Steel
Hull	Steel
Cabin side	Steel
Roof	Steel

Hull blacking

Last hull blacking	2022
Where	Charity Docks, Bedworth



**Running gear****Engine**

Make	Lister Petter
Model	LPW4
Year	1996
Fuel	Diesel
Cooling	Water Cooled
Hours	--
Last serviced date	2025
Last serviced by	Marine Engine Service (Midlands)

Gearbox

Make	--
Model	--
Year	--
Reduction	--
Coupling	--
Shaft diameter	--
Propellor size	--

Capacities

Fuel	--
Water	--
Gas type	--

No. of gas cylinders	--
Gas cylinder size	--

Interior**Fitted**

Fitted by	Project
Date fitted	--

Materials used

Floor	--
Hull sides	--
Cabin sides	--
Deckhead	--
Bulkheads	--
Fittings	--



**Equipment****In the galley**

Cooker type	--
Cooker model	--
Fridge type	--
Fridge model	--
Other	--

Heating

Type	Air Heating
Make	Eberspacher
Model	--
Fuel	Diesel
Other remarks	the unit needs to be serviced and reattached to the electric

Hot water

Type	Immersion
Make	Calorifier
Model	--
Fuel	220volt
Other remarks	--
Additional heating	--

In the bathroom

Bath	--
Shower	--
Hip bath	--
Basin	--
Toilet type	--
Toilet make	--
Toilet model	--
Toilet tank capacity	--
Toilet remarks	--

Electrical systems

DC voltage	--
No. of batteries (start)	1
No. of batteries (domestic)	1
Split charging	--
Other	3 solar panels

240 volt electrical systems

Inverter make	--
Inverter rating	--
Generator make	--
Generator rating	--
Shoreline	YES
Other	--

Additional information

--

