



## Little Current

Blackwater Meadow Marina

£45,000.00

A 50ft 1999 Stenson 4 berth semi-traditional stern narrowboat

This well presented electric semi-traditional boat is ideal for those summer adventures on the waterways.

Stepping into Little Current you will find the main bedroom which has a double bed and some storage space. As you enter the boat you will also find the control panel.

Next you will find the shower room which has a corner shower tray with shower curtain, a cassette toilet and a wash basin.

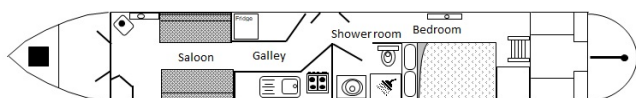
Entering into the Galley area you have a 4 burner gas stove with a grill and oven, a fridge, a kitchen sink with drainer and storage cupboard for all your groceries. There is ample work surfaces for preparing your meals.

Joining the Galley is the saloon area which has two built in sofa benches aligned with each other which can convert into a temporary double bed for guests. Located in the corner is a wood stove for those colder nights, a unit to place a small TV and a small area to fit a small chair or pop up table.

Exiting the boat into the bow there is some space for outdoor appliances which is protected by a cratch cover.

Little Current has a Boat Safety Certificate valid until May 2027.

You won't want to miss out on this superb boat. To arrange a viewing, or for any further information, please contact Blackwater Meadow Marina on 01691 624391.



Overall length	50 feet
Beam	6 feet 10 inches
Draft	--
Headroom	--
No. of berths	4
Style of stern	
BSS certificate expiry	--
Built	In 1999 by STENSON
Fitout	
Base	STEEL
Hull	STEEL
Cabin	STEEL
Engine	LYNCH MOTORS SWORDFISH
Gearbox	--



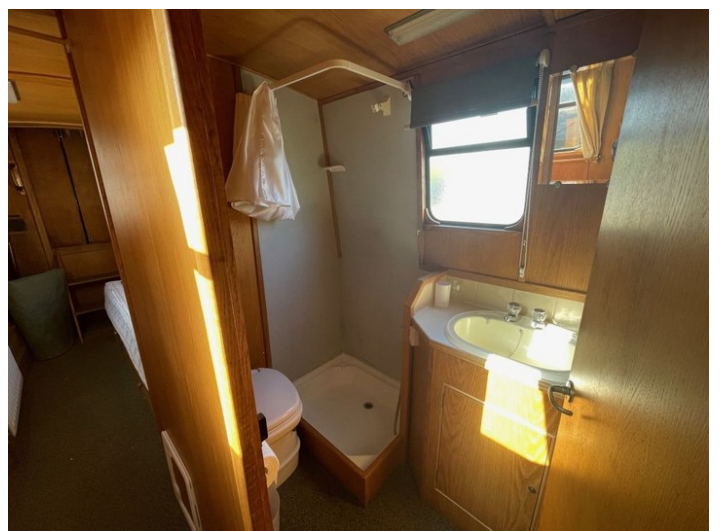


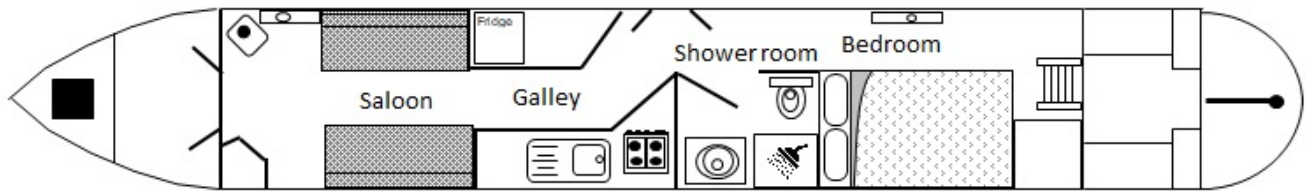
---

Scan the QR code to view online











## General

### General

Name	Little Current
BW index number	503818
Safety certificate	YES
BSS certificate expiry	--
BSS certificate number	BSSER-458862/23
Built	In 1999 by STENSON
Location	Blackwater Meadow Marina
Price	£45,000.00

### Berths

No. of Berths	4
Double beds	1
Double beds (temp)	1
Single beds	--
Single beds (temp)	--

### Size

Overall length	50 feet
Overall beam	6 feet 10 inches
Overall draft	--
Style of stern	

## Structure

### Manufacturer

Manufacturer	STENSON
Hull ID No.	GBMCC-SS208B999
Build date	1999

### Original steel thickness

Base	--
Hull	--
Cabin	--

### Anodes

Fitted	NO
Date fitted	--
Size	--
No. of anodes	--

### Material

Base	STEEL
Hull	STEEL
Cabin side	STEEL
Roof	STEEL

### Hull blacking

Last hull blacking	2025-03
Where	Blackwater Meadow Marina



**Running gear****Engine**

Make	LYNCH MOTORS
Model	SWORDFISH
Year	2022
Fuel	ELECTRIC
Cooling	AIR
Hours	--
Last serviced date	--
Last serviced by	--

**Gearbox**

Make	--
Model	--
Year	--
Reduction	--
Coupling	--
Shaft diameter	--
Propellor size	--

**Capacities**

Fuel	--
Water	--
Gas type	PROPANE

No. of gas cylinders	2
Gas cylinder size	13KG

**Interior****Fitted**

Fitted by	--
Date fitted	--

**Materials used**

Floor	CARPET/VINYL
Hull sides	OAK FACE PLY
Cabin sides	OAK FACE PLY
Deckhead	--
Bulkheads	--
Fittings	--





**Equipment****In the galley**

Cooker type	GAS
Cooker model	STOVES
Fridge type	MATSUI
Fridge model	--
Other	Electric fridge

**Heating**

Type	CENTRAL HEATING
Make	Aldi comfort
Model	--
Fuel	--
Other remarks	--

**Hot water**

Type	CENTRAL HEATING
Make	ALDI COMFORT
Model	--
Fuel	PROPANE
Other remarks	--
Additional heating	WOOD STOVE / GO ECO ADVENTURE 5

**In the bathroom**

Bath	NO
Shower	YES
Hip bath	NO
Basin	YES
Toilet type	CASSETTE
Toilet make	THETFORD
Toilet model	C-200C503
Toilet tank capacity	--
Toilet remarks	--

**Electrical systems**

DC voltage	12
No. of batteries (start)	--
No. of batteries (domestic)	--
Split charging	--
Other	--

**240 volt electrical systems**

Inverter make	VICTRON
Inverter rating	1200W
Generator make	EXCELL POWER
Generator rating	4KW
Shoreline	YES
Other	--

**Additional information**

--

