



Kitty

Goytre Wharf

£17,500.00

A 23ft 1989 Springer 3 berth cruiser stern narrowboat.

Kitty is a delightful and characterful 23ft cruiser narrowboat, ideal for relaxed cruising and cosy adventures on the water. Her distinctive green exterior with red and yellow detailing gives her real charm and makes her stand out wherever she goes. Her rich wooden interior is adorned with traditional canal art and a gorgeous Roses & Castle motif runs throughout.

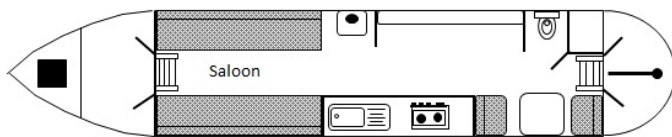
Despite her compact size, Kitty is thoughtfully laid out and can sleep up to three people. She has an open-plan interior with two seating areas, one at each end of the boat, which easily convert into comfortable sleeping accommodation. This flexible layout makes her perfect for weekend trips or short breaks afloat.

At the stern there is a dinette which can open out into a single bed. Under the bulkhead there is also a storage area. Opposite the dinette is a WC with a cassette toilet.

The galley area sits neatly between the two living/ sleeping spaces and is well equipped for a boat of this size. It features a 2-burner hob, kettle, sink, cooker, portable cooler, and handy storage space for cooking essentials. There is also a solid fuel stove, providing warmth and comfort during cooler days on board.

Kitty is powered by a Tohatsu outboard engine, making her easy to manoeuvre and economical to run. A good-sized cratch cover offers excellent protection from the elements.

Please contact Goytre Wharf to arrange a viewing or for further information on 01873 880516.



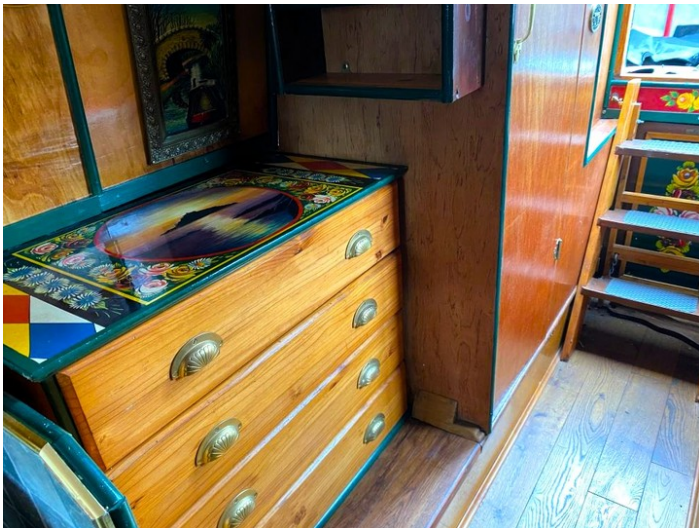
Overall length	23 feet
Beam	6 feet 10 inches
Draft	--
Headroom	--
No. of berths	3
Style of stern	--
BSS certificate expiry	--
Built	In 1989 by Springer
Fitout	
Base	
Hull	
Cabin	
Engine	Tohatsu
Gearbox	--

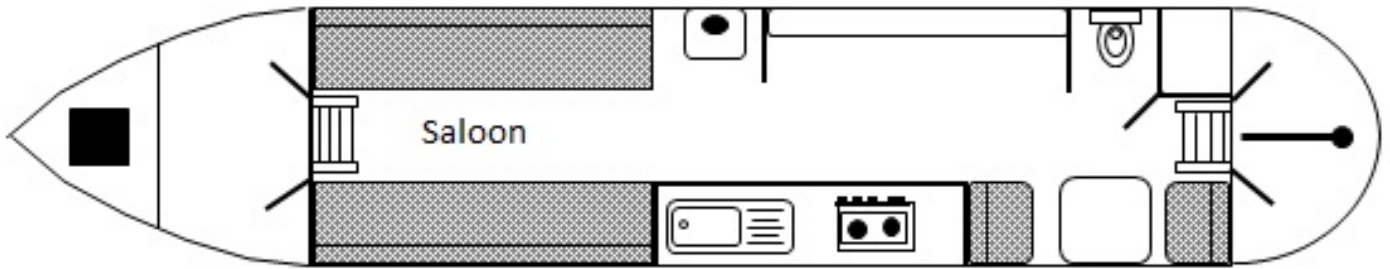




Scan the QR code to view online







**General****General**

Name	Kitty
BW index number	47498
Safety certificate	NO
BSS certificate expiry	--
BSS certificate number	--
Built	In 1989 by Springer
Location	Goytre Wharf
Price	£17,500.00

Berths

No. of Berths	3
Double beds	0
Double beds (temp)	1
Single beds	0
Single beds (temp)	1

Size

Overall length	23 feet
Overall beam	6 feet 10 inches
Overall draft	--
Style of stern	--

Structure**Manufacturer**

Manufacturer	Springer
Hull ID No.	--
Build date	1989

Original steel thickness

Base	--
Hull	--
Cabin	--

Anodes

Fitted	NO
Date fitted	--
Size	--
No. of anodes	--

Material

Base	--
Hull	--
Cabin side	--
Roof	--

Hull blacking

Last hull blacking	2023
Where	Goytre Wharf





Running gear

Engine

Make	Tohatsu
Model	--
Year	--
Fuel	Petrol
Cooling	--
Hours	--
Last serviced date	--
Last serviced by	--

Gearbox

Make	--
Model	--
Year	--
Reduction	--
Coupling	--
Shaft diameter	--
Propellor size	--

Capacities

Fuel	--
Water	--
Gas type	--

No. of gas cylinders	--
Gas cylinder size	--

Interior

Fitted

Fitted by	--
Date fitted	--

Materials used

Floor	--
Hull sides	--
Cabin sides	--
Deckhead	--
Bulkheads	--
Fittings	--





Equipment

In the galley

Cooker type	Hob and Oven
Cooker model	--
Fridge type	--
Fridge model	--
Other	--

Heating

Type	Wood burning stove
Make	--
Model	--
Fuel	--
Other remarks	--

Hot water

Type	--
Make	--
Model	--
Fuel	--
Other remarks	--
Additional heating	--

In the bathroom

Bath	--
Shower	--
Hip bath	--
Basin	--
Toilet type	--
Toilet make	--
Toilet model	--
Toilet tank capacity	--
Toilet remarks	--

Electrical systems

DC voltage	--
No. of batteries (start)	--
No. of batteries (domestic)	--
Split charging	--
Other	--

240 volt electrical systems

Inverter make	--
Inverter rating	--
Generator make	--
Generator rating	--
Shoreline	NO
Other	--

Additional information

--

