



Gelli Bean Too

Springwood Haven Marina

£59,000.00

A 57ft 2006 Sabre Narrowboats 4 berth semi-traditional stern narrowboat.

Step aboard Gelli Bean Too, a beautifully presented narrowboat boasting a vibrant blue exterior and a thoughtfully designed modern interior. Whether you're searching for a cosy family home or a vessel ready for unforgettable canal adventures, this boat offers both comfort and charm in equal measure.

As you enter, you are welcomed into a comfortable double bedroom, laid with carpet and complete with a wardrobe.

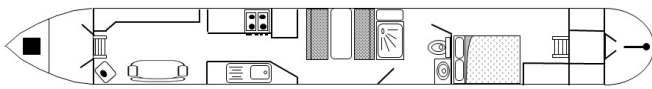
Moving forward, you find a contemporary walkthrough shower room featuring a corner shower, cassette toilet, and basin.

Next is the cosy dinette area, perfectly suited for family meals or entertaining guests. The seating accommodates up to four people and conveniently converts into an additional double bed when needed. Stylish wall panelling adds a chic and modern touch to the cabin.

The galley and saloon area has been cleverly laid out to combine functionality with elegance. Here you'll find generous work surfaces for meal preparation, ample storage for groceries, a cooker with a four-burner hob and a sink with surface drainer. The saloon offers a relaxing space to unwind, complete with a sofa.

A Boat Safety Certificate is valid May 2029.

For more information or to arrange a viewing please contact Springwood Haven Marina on 02476 393676.



Overall length	57 feet
Beam	--
Draft	2 feet
Headroom	--
No. of berths	4
Style of stern	
BSS certificate expiry	--
Built	In 2006 by Reeves/Sabre Narrowboats
Fitout	
Base	Steel 10mm
Hull	Steel 6mm
Cabin	Steel
Engine	Vetus m417k602A Vetus
Gearbox	Technodrive TM60m mechanical

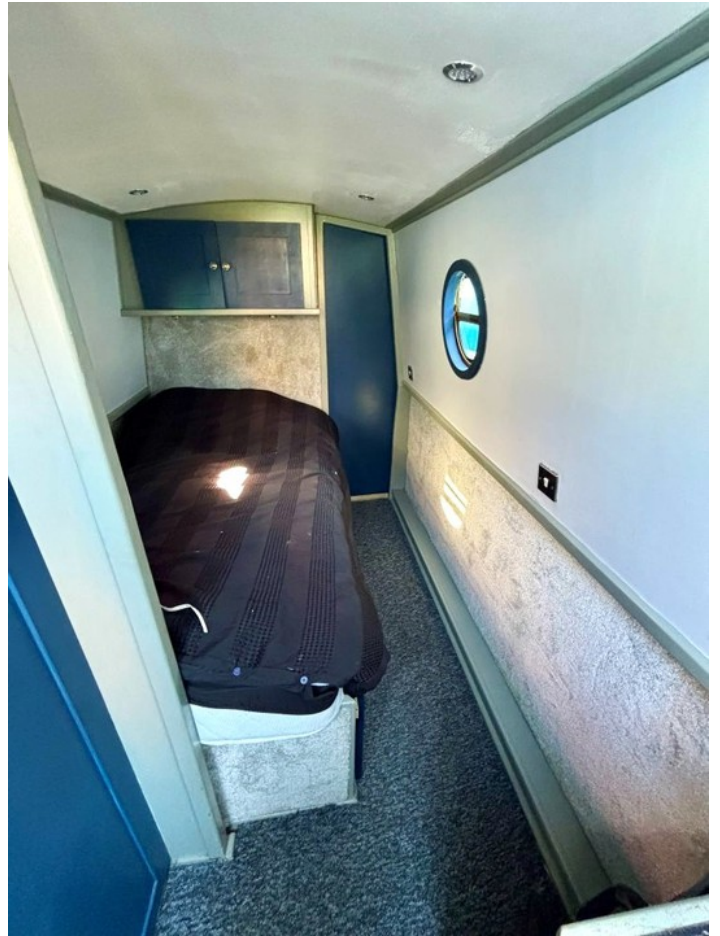


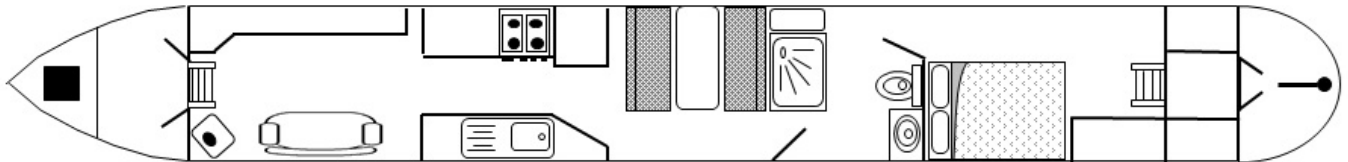


Scan the QR code to view online









**General****General**

Name	Gelli Bean Too
BW index number	514392
Safety certificate	YES
BSS certificate expiry	--
BSS certificate number	BSSER-506019/25
Built	In 2006 by Reeves/Sabre Narrowboats
Location	Springwood Haven Marina
Price	£59,000.00

Berths

No. of Berths	4
Double beds	1
Double beds (temp)	1
Single beds	--
Single beds (temp)	--

Size

Overall length	57 feet
Overall beam	--
Overall draft	2 feet
Style of stern	

Structure**Manufacturer**

Manufacturer	Reeves/Sabre Narrowboats
Hull ID No.	--
Build date	2006

Original steel thickness

Base	10mm
Hull	6mm
Cabin	--

Anodes

Fitted	YES
Date fitted	July 2025
Size	--
No. of anodes	--

Material

Base	Steel
Hull	Steel
Cabin side	Steel
Roof	Steel

Hull blacking

Last hull blacking	2025 July
Where	Hillmorton Boatyard



**Running gear****Engine**

Make	Vetus m417k602A
Model	Vetus
Year	--
Fuel	Diesel
Cooling	Keel cooled skin tank
Hours	4673
Last serviced date	April 2025
Last serviced by	Owner

Gearbox

Make	Technodrive
Model	TM60m mechanical
Year	--
Reduction	2:1
Coupling	--
Shaft diameter	--
Propellor size	--

Capacities

Fuel	205l litres
Water	682 litres
Gas type	LPG

No. of gas cylinders	1
Gas cylinder size	13kg

Interior**Fitted**

Fitted by	--
Date fitted	--

Materials used

Floor	Wood
Hull sides	Carpet
Cabin sides	Painted ply
Deckhead	--
Bulkheads	--
Fittings	--



**Equipment****In the galley**

Cooker type	yes
Cooker model	--
Fridge type	yes
Fridge model	--
Other	--

Heating

Type	Solid fuel stove
Make	Bubble corner stove
Model	--
Fuel	--
Other remarks	--

Hot water

Type	Calorifier
Make	Twin coil, fed from engine
Model	--
Fuel	--
Other remarks	--
Additional heating	--

In the bathroom

Bath	--
Shower	yes
Hip bath	--
Basin	yes
Toilet type	Cassette
Toilet make	--
Toilet model	--
Toilet tank capacity	682 litres
Toilet remarks	Glass shower screen

Electrical systems

DC voltage	--
No. of batteries (start)	1
No. of batteries (domestic)	4
Split charging	--
Other	--

240 volt electrical systems

Inverter make	Victron
Inverter rating	--
Generator make	--
Generator rating	--
Shoreline	YES
Other	--

Additional information

--

