



Curtis

Farncombe Boat House

£44,950

A 45ft 2001 AJ Francis 4 berth traditional stern narrowboat.

Curtis is a charming narrowboat with a full wooden interior, giving her a cosy feel.

As you enter from the stern, you first enter the bedroom cabin. This has a pull down double bed which can be conveniently tucked away should you need more space. The engine room is next, with its Lister HA2 engine proudly on display.

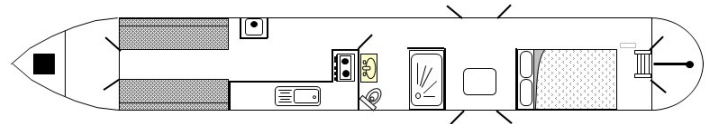
A neatly tiled bathroom follows which is fitted with a bath with shower above, macerator toilet and a wash basin.

The galley is equipped with a Belfast style sink with a beautiful swan's neck mixer tap and a 2 burner hob. There is plenty of storage under the lovely wooden worktops. There is also a solid fuel Morso Squirrel stove, perfect for when the temperature drops.

The final cabin is the saloon. This has 2 sofas that can be converted into extra beds should they be required. Steps then lead out onto a tug style bow.

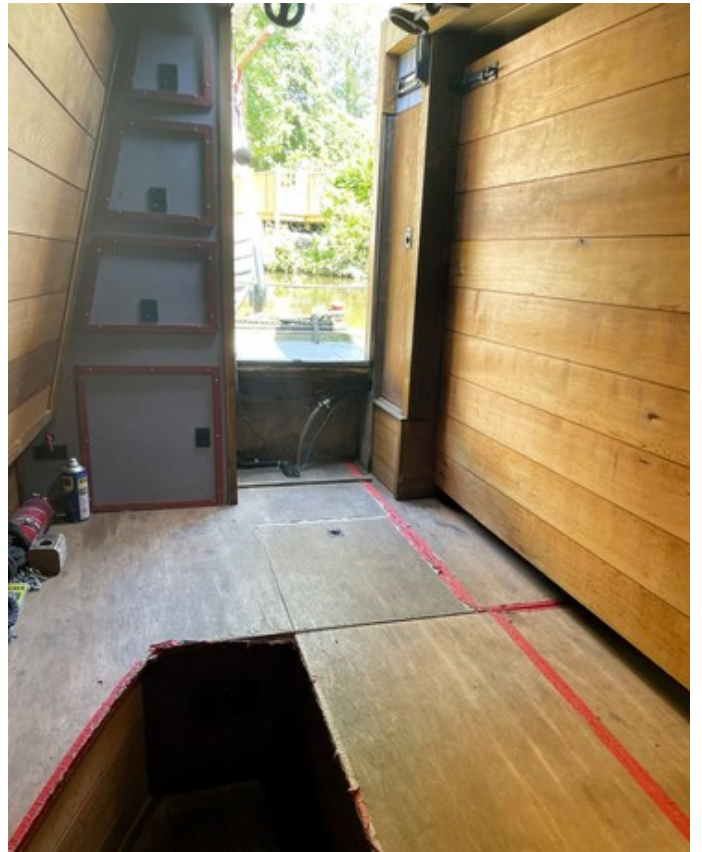
To arrange a viewing or for further information about this boat, please contact Farncombe Boat House on 01483 421360

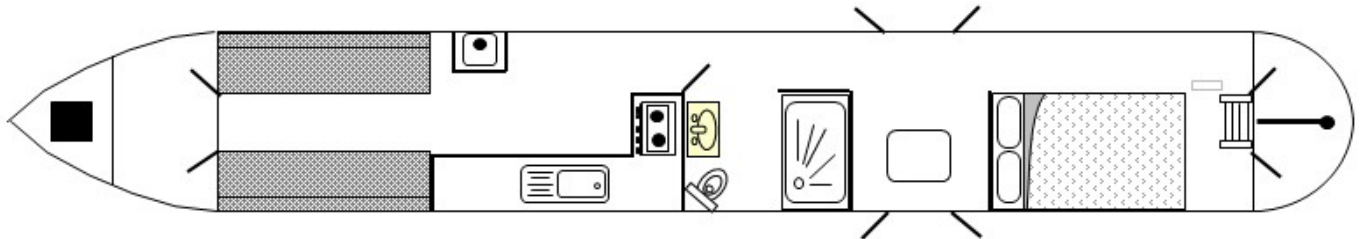
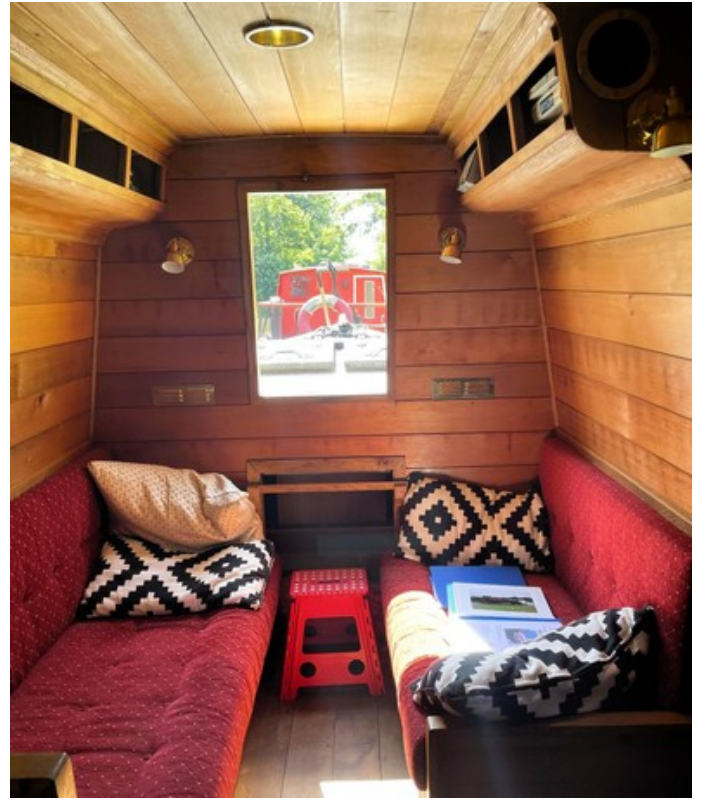
Scan the QR code to view online



Overall length	45 feet
Beam	6 feet 10 inches
Draft	2 feet 4 inches
Headroom	--
No. of berths	4
Style of stern	Traditional
BSS certificate expiry	7th July 2028
Built	In 2001 by AJ Francis
Fitout	In 2016 by Owner
Base	Steel 10mm
Hull	Steel 6mm
Cabin	Steel 4mm
Engine	Lister HA2
Gearbox	PRM









General

General

Name	Curtis
BW index number	505966
Safety certificate	YES
BSS certificate expiry	7th July 2028
BSS certificate number	BSSER-481747/24
Built	In 2001 by AJ Francis
Location	Farncombe Boat House
Price	£44,950

Berths

No. of Berths	4
Double beds	1
Double beds (temp)	1
Single beds	--
Single beds (temp)	--

Size

Overall length	45 feet
Overall beam	6 feet 10 inches
Overall draft	2 feet 4 inches
Style of stern	Traditional

Structure

Manufacturer

Manufacturer	AJ Francis
Hull ID No.	--
Build date	2001

Original steel thickness

Base	10mm
Hull	6mm
Cabin	4mm

Anodes

Fitted	YES
Date fitted	2016
Size	--
No. of anodes	4

Material

Base	Steel
Hull	Steel
Cabin side	Steel
Roof	Steel

Hull blacking

Last hull blacking	2020
Where	Stanstead Abbots





Running gear

Engine

Make	Lister
Model	HA2
Year	--
Fuel	Diesel
Cooling	Air
Hours	--
Last serviced date	2020
Last serviced by	Owner

Gearbox

Make	PRM
Model	--
Year	--
Reduction	--
Coupling	--
Shaft diameter	--
Propellor size	--

Capacities

Fuel	400Ltrs
Water	--
Gas type	Propane

No. of gas cylinders	2
Gas cylinder size	13kg

Interior

Fitted

Fitted by	Owner
Date fitted	2016

Materials used

Floor	Oak
Hull sides	Cedar
Cabin sides	Cedar
Deckhead	--
Bulkheads	Cedar
Fittings	--





Equipment

In the galley

Cooker type	2 Hob
Cooker model	--
Fridge type	--
Fridge model	--
Other	--

Heating

Type	Solid Fuel Stove
Make	Morso
Model	Squirrel
Fuel	--
Other remarks	--

Hot water

Type	--
Make	Morco
Model	D61B
Fuel	--
Other remarks	--
Additional heating	Hot Air Propex Heat Source

In the bathroom

Bath	--
Shower	Yes
Hip bath	Yes
Basin	Yes
Toilet type	Macerator
Toilet make	Vetus
Toilet model	--
Toilet tank capacity	--
Toilet remarks	Pure water Filter for bathroom sink

Electrical systems

DC voltage	--
No. of batteries (start)	1
No. of batteries (domestic)	3
Split charging	--
Other	New Batteries Last year Cabin is Spray Foam Insulated

240 volt electrical systems

Inverter make	--
Inverter rating	--
Generator make	--
Generator rating	--
Shoreline	YES
Other	--

Other

Additional information

--

