



Charlotte Emily

Blackwater Meadow Marina

£19,995.00

A 26ft 2007 Viking Mouldings 6 berth GRP motor cruiser.

Built by the well-respected Viking Mouldings, Charlotte Emily is a well-equipped motor cruiser which can sleep up to 6 people on board. And at 26ft she is a great size for exploring the waterways. She was treated to an interior refurbishment in 2024 and is now looking very smart indeed!

At the bow of the boat is a seating area which can be converted in to a double berth.

Adjacent to this is the galley which is equipped with a fridge, hob and oven and sink with draining board.

The inbuilt units also provide you with useful storage for all of your kitchen items.

Opposite the units is a dinette which can be converted into a double berth. There is also a bathroom in this area of the boat with toilet and overhead shower.

Steps from here take you up into the cockpit in the middle of the boat.

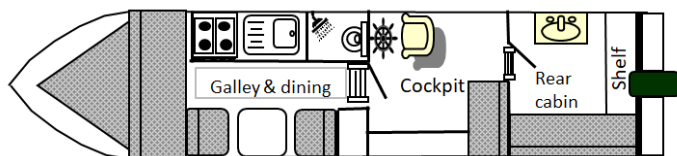
There is additional seating in the cockpit which also has storage underneath.

In the aft cabin there is a wash basin and further seating which provides another area to relax on board. This can also be converted into a double berth.

There is a solar panel on the roof and Charlotte Emily also benefits from her own shoreline.

A Boat Safety Certificate is valid until February 2028.

To enquire about this handsome vessel, or arrange an appointment to view, please contact Blackwater Meadow Marina on 01691 624391.



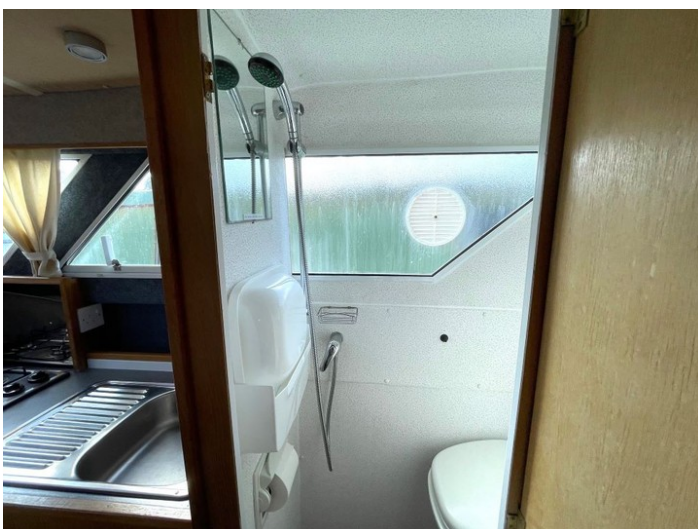
Overall length	26 feet
Beam	6 feet 10 inches
Draft	1 feet 6 inches
Headroom	--
No. of berths	6
Style of stern	
BSS certificate expiry	--
Built	In 2007 by Viking Mouldings
Fitout	In 2024 by Viking/ Upgrade David Mawby
Base	GRP
Hull	GRP
Cabin	GRP
Engine	Suzuki 25hp
Gearbox	--

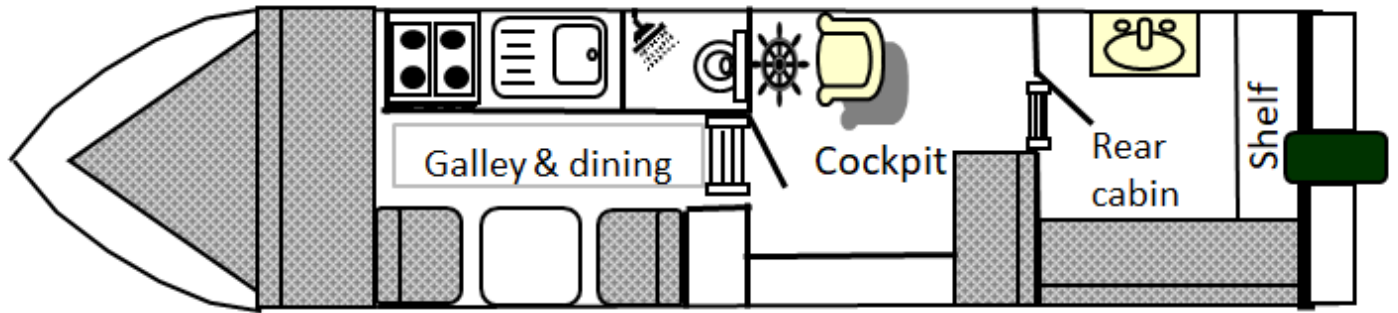




Scan the QR code to view online







**General****General**

Name	Charlotte Emily
BW index number	120697
Safety certificate	NO
BSS certificate expiry	--
BSS certificate number	BSSER-475188/24
Built	In 2007 by Viking Mouldings
Location	Blackwater Meadow Marina
Price	£19,995.00

Berths

No. of Berths	6
Double beds	--
Double beds (temp)	3
Single beds	--
Single beds (temp)	--

Size

Overall length	26 feet
Overall beam	6 feet 10 inches
Overall draft	1 feet 6 inches
Style of stern	

Structure**Manufacturer**

Manufacturer	Viking Mouldings
Hull ID No.	GB-VIK-26CC-622-F-700
Build date	2007

Original steel thickness

Base	--
Hull	--
Cabin	--

Anodes

Fitted	NO
Date fitted	--
Size	--
No. of anodes	--

Material

Base	GRP
Hull	GRP
Cabin side	GRP
Roof	GRP

Hull blacking

Last hull blacking	--
Where	--



**Running gear****Engine**

Make	Suzuki
Model	25hp
Year	--
Fuel	Petrol
Cooling	Water
Hours	395
Last serviced date	2024-01
Last serviced by	Glebefoil Ltd

Gearbox

Make	--
Model	--
Year	--
Reduction	--
Coupling	--
Shaft diameter	--
Propellor size	--

Capacities

Fuel	--
Water	--
Gas type	--

No. of gas cylinders	2
Gas cylinder size	--

Interior**Fitted**

Fitted by	Viking/ Upgrade David Mawby
Date fitted	2024

Materials used

Floor	--
Hull sides	--
Cabin sides	--
Deckhead	--
Bulkheads	--
Fittings	--



**Equipment****In the galley**

Cooker type	Built in oven and hob
Cooker model	Vanette 4000/2
Fridge type	Sawafuj, Electric
Fridge model	Engel
Other	--

Heating

Type	Blown Air
Make	Heatsource
Model	--
Fuel	Gas
Other remarks	--

Hot water

Type	Gas
Make	Truma
Model	--
Fuel	Gas
Other remarks	--
Additional heating	--

In the bathroom

Bath	No
Shower	Yes
Hip bath	--
Basin	Yes
Toilet type	Cassette
Toilet make	Thetford
Toilet model	--
Toilet tank capacity	--
Toilet remarks	--

Electrical systems

DC voltage	12v
No. of batteries (start)	1
No. of batteries (domestic)	1
Split charging	--
Other	Solar panel

240 volt electrical systems

Inverter make	--
Inverter rating	--
Generator make	--
Generator rating	--
Shoreline	YES
Other	--

Additional information

--

