



Brunel Class Sail-Away

Alvechurch Marina

£54,950.00

A brand new 58ft sail-away shell which can be fitted out to any stage to your own specification

This is a great opportunity to purchase a newly built narrowboat as a sail-away ready to be fitted out to your own specification.

The Brunel Class by Crafted Boats is a 58 foot shell already fitted with a Barrus Shire 43hp engine and running gear. Ballasted and insulated with expanding foam and fitted with windows, doors and ventilators as a weatherproof sail-away.

The hull is bitumen coated to the top rubbing strake as is the internal bilge for protection. The topsides are primed and painted in a single colour two pack gloss paint with a single coach line. Slip resistant finish is applied to all decks, gunwales and roof.

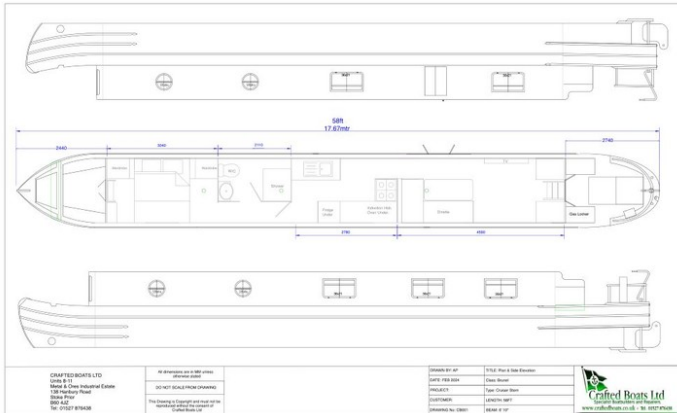
A bow thruster tube is fitted.

Other configurations will be available.

To start your new adventures on the waterways, please contact Alvechurch Marina on 0121 445 1133.

Additional information

The attached layout is a suggested configuration given the window spacing



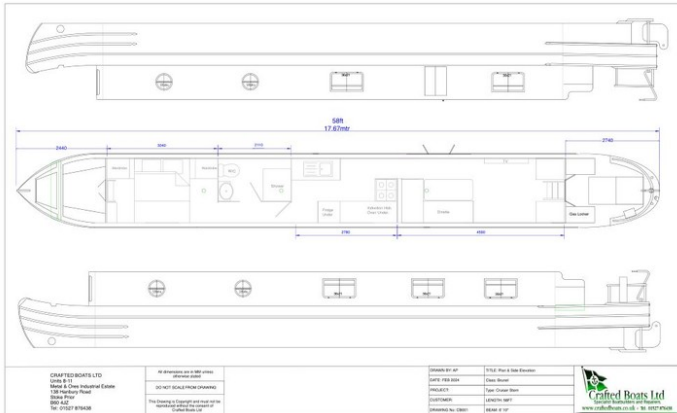
Overall length	58 feet
Beam	6 feet 10 inches
Draft	2 feet
Headroom	--
No. of berths	--
Style of stern	
BSS certificate expiry	--
Built	In 2024 by Crafted Boats Ltd
Fitout	
Base	Steel 10mm
Hull	Steel 6mm
Cabin	Steel 5mm / 4mm
Engine	Barrus Shire 43
Gearbox	PRM 150 D2





Scan the QR code to view online





Brunel class
Sail away stage

Hull and Cabin steelwork

- Length** 17.67 metres (58ft)
- Beam** 2.08 metres (6ft 10")
- Bottom Plates** 10mm.
- Hull Sides** 6mm.
- Cabin sides** 5mm
- Decks** 5mm
- Roof** 4mm with 75mm curvature.
- Bulkheads** 4mm
- Base Plate framing** 100 x 50 x 6mm angle (nominal 700mm centres)
- Knees and stringers** 60 x 60 x 6mm angle (nominal 700mm centres)
- Cabin roof bearers** 25 x 25 x 3mm box section. (nominal 450mm centres)
- Rubbing Strakes** 50mm x 13mm convex - three at bow, three at stern including one full length – all fully welded top & bottom.
- Bow Thruster** tube fitted with lift out box.
- Diesel Tank** Integral with hull. Main tank: nominal capacity 250 ltr. Pressure tested with vent and flame guard fitted.
- Weed Hatch** - Quick release type.
- Rudder and tiller** - 50mm dia. stock with tapered top, single bolt fitting. Balanced blade. Swans neck 38mm dia. With chrome / wooden extension.
- Water tank** - Integral below self-draining well deck. Minimum capacity 450 ltr. Chrome water filler.
- Forward Locker** - forward locker with hinged steel hatch.
- Bow cockpit lockers** fitted on port & starboard sides.
- Bow Fender** - Rope V bow fender.
- Stern deck lockers** fitted on port and starboard sides, gas locker on port to house 2x 13kg gas cylinder (cylinder not supplied)
- Stern Fender** - Rope Tipcat & button fenders.
- Engine bay hatches** Hinged steel with lifting handle.

Sundries

Bow tee stud, stern dollies x 2, centre roof ring. Tee section handrail. Steel taff rail. Steel boat pole and plank retainers. Horn and LED tunnel light fitted, 4 x 2.8kg anodes.

Ballast concrete paving slabs placed on base plate as required by design and trim.

Windows and Doors

Matt black powder coating aluminium, single glazed, clamp-in windows to be fitted. Obscure glass in bathroom compartment. Bow, stern and swan cabin doors to be folded steel with welded hinges. Bow doors with fixed single glazing. Folded steel sliding hatch at stern.





Engine

A Barrus Shire 43 Marine inboard diesel engine with PRM 150D2 gearbox matched to a suitable propeller. The installation will include: - keel cooling, R & D coupling, flexible mounts, Hospital silencer, 1 x 95ah starter batteries and 1 x 110ah system batteries, manufacturer control panel. A stern tube lubricator and bilge pump and a single lever engine control will also be fitted.

The Interior

Linings

Floors are laid in 18mm. (treated) Far Eastern plywood laid on treated bearer.

Insulation

Treated timber battens fitted and the internal hull sides, cabin sides and coach roof coated with flame retardant spray foam insulation (nominal 25mm thickness).

Ventilation

3 mushroom vents and 2 low lever bilge vents

Painting

The external hull sides will be coated with bitumen coating up to the top rubbing strake. The internal cabin bilge will be painted with bitumen.

All external surfaces will be primed and finished with two-pack gloss finishes. Slip resistant finish to decks, gunwales, and coach roof. Single coachline.

Safety and Navigation Equipment

Bow and stern fenders will be fitted, and three mooring lines supplied.

**12-months warranty at point of sale
Can be taken to any build stage.**

£59,950.00 inclusive of vat





General

General

Name	Brunel Class Sail-Away
BW index number	--
Safety certificate	NO
BSS certificate expiry	--
BSS certificate number	--
Built	In 2024 by Crafted Boats Ltd
Location	Alvechurch Marina
Price	£54,950.00

Berths

No. of Berths	--
Double beds	--
Double beds (temp)	--
Single beds	--
Single beds (temp)	--

Size

Overall length	58 feet
Overall beam	6 feet 10 inches
Overall draft	2 feet
Style of stern	

Structure

Manufacturer

Manufacturer	Crafted Boats Ltd
Hull ID No.	--
Build date	2024

Original steel thickness

Base	10mm
Hull	6mm
Cabin	5mm / 4mm

Anodes

Fitted	YES
Date fitted	2024
Size	2.8Kg
No. of anodes	4

Material

Base	Steel
Hull	Steel
Cabin side	Steel
Roof	Steel

Hull blacking

Last hull blacking	Feb 2024
Where	Crafted Boats Ltd





Running gear

Engine

Make	Barrus
Model	Shire 43
Year	2024
Fuel	Diesel
Cooling	Keel
Hours	--
Last serviced date	--
Last serviced by	--

Gearbox

Make	PRM
Model	150 D2
Year	--
Reduction	--
Coupling	R&D
Shaft diameter	1 1/2"
Propellor size	--

Capacities

Fuel	250 Litres (approx)
Water	450 Litres (approx)
Gas type	--

No. of gas cylinders	--
Gas cylinder size	--

Interior

Fitted

Fitted by	--
Date fitted	--

Materials used

Floor	--
Hull sides	--
Cabin sides	--
Deckhead	--
Bulkheads	--
Fittings	--





Equipment

In the galley

Cooker type	--
Cooker model	--
Fridge type	--
Fridge model	--
Other	--

Heating

Type	--
Make	--
Model	--
Fuel	--
Other remarks	--

Hot water

Type	--
Make	--
Model	--
Fuel	--
Other remarks	--
Additional heating	--

In the bathroom

Bath	--
Shower	--
Hip bath	--
Basin	--
Toilet type	--
Toilet make	--
Toilet model	--
Toilet tank capacity	--
Toilet remarks	--

Electrical systems

DC voltage	12v
No. of batteries (start)	1
No. of batteries (domestic)	1
Split charging	--
Other	--

240 volt electrical systems

Inverter make	--
Inverter rating	--
Generator make	--
Generator rating	--
Shoreline	NO
Other	--

Additional information

The attached layout is a suggested configuration given the window spacing

