

Overall length	57 feet
Beam	6 feet 10 inches
Draft	2 feet 3 inches
Headroom	6 feet 2 inches
No. of berths	4
Style of stern	
BSS certificate expiry	--
Built	In 2004 by Bluewater Boats Ltd
Fitout	In 2005 by M.E Munns
Base	Steel 10
Hull	Steel 6





Cabin	Steel 4
Engine	Beta 38 Green Line
Gearbox	PRM 120 1205078400478

## Blue Moon

Springwood Haven Marina

£57,000.00

A 57ft 2004 Bluewater Boats 4 berth semi-traditional stern narrowboat

Step aboard Blue Moon, a well-presented narrowboat with a traditional layout and a warm, welcoming feel throughout. Thoughtfully designed to maximise space, storage, and versatility, she makes excellent use of every area on board.

At the stern, a semi-traditional deck provides a pleasant seating space, with steps leading down into the rear cabin. Here you'll find the main bedroom, featuring a comfy sofa bed that easily converts into a cross-bed in the evening.

Moving forward through the hallway, the shower room is located on the left. It includes a cassette toilet, a shower with bi-fold doors, a mirrored cabinet, towel rail, and a corner wash basin.

The galley is both spacious and practical, offering everything needed for day-to-day living. On the left-hand side are the sink and storage cupboards, while the right-hand side features a glass hob, oven with grill, microwave, under-counter larder fridge, and an additional under counter freezer.

Between the galley and saloon there is an additional storage cabinet, with a glass display cabinet above.

The living space continues into a flexible seating area, ideal for dining with a table or converting into a double bed for overnight use. This flows into a cosy lounge area with two swivel armchairs and a corner stove, creating a comfortable spot to relax.

For more information or to arrange a viewing, please contact Springwood Haven Marina on 02476 393676.





---

## Additional information

Washing Machine- Zanussi Aqua Cycle 1300

New rear Titan canopy fitted on 24/03/2026

Roof box with 2 outdoor chairs

Washing line

Shopping Trolley

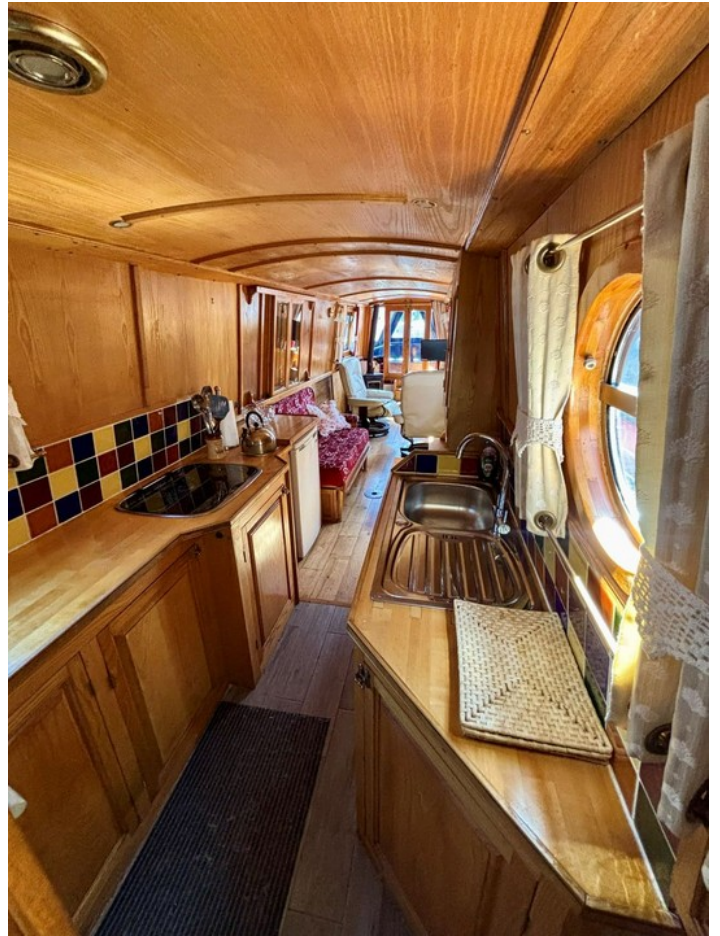
2 life jackets

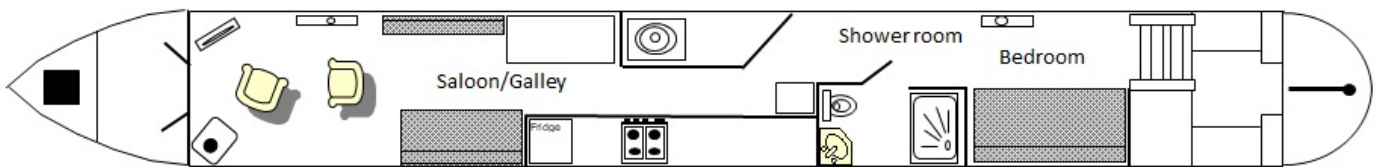
3 x Toilet Cassettes

Scan the QR code to view online









**General**

## General

Name	Blue Moon
BW index number	518832
Safety certificate	NO
BSS certificate expiry	--
BSS certificate number	--
Built	In 2004 by Bluewater Boats Ltd
Location	Springwood Haven Marina
Price	£57,000.00

## Berths

No. of Berths	4
Double beds	1
Double beds (temp)	1
Single beds	--
Single beds (temp)	--

## Size

Overall length	57 feet
Overall beam	6 feet 10 inches
Overall draft	2 feet 3 inches
Style of stern	

**Structure**

## Manufacturer

Manufacturer	Bluewater Boats Ltd
Hull ID No.	EB-RYA00547E505
Build date	2004

## Original steel thickness

Base	10
Hull	6
Cabin	4

## Anodes

Fitted	YES
Date fitted	2025
Size	--
No. of anodes	10

## Material

Base	Steel
Hull	Steel
Cabin side	Steel
Roof	Steel

## Hull blacking

Last hull blacking	2025-04
Where	Norton Canes



**Running gear****Engine**

Make	Beta 38
Model	Green Line
Year	2004
Fuel	Diesel
Cooling	--
Hours	--
Last serviced date	2026-04
Last serviced by	Owner

**Gearbox**

Make	PRM 120
Model	1205078400478
Year	--
Reduction	2:1
Coupling	--
Shaft diameter	1.5
Propellor size	16X10

**Capacities**

Fuel	200
Water	500
Gas type	Propane

No. of gas cylinders	2
Gas cylinder size	6

**Interior****Fitted**

Fitted by	M.E Munns
Date fitted	2005

**Materials used**

Floor	Oak
Hull sides	Ashfaced ply
Cabin sides	Ashfaced ply
Deckhead	--
Bulkheads	--
Fittings	Brass



**Equipment****In the galley**

Cooker type	--
Cooker model	Mini Prima
Fridge type	Shoreline
Fridge model	Larder
Other	Freezer- Shoreline Microwave- Hinari

**Heating**

Type	Solid Fuel
Make	Arrow- Beeton Bunny
Model	BSM055723
Fuel	Coal/Wood
Other remarks	--

**Hot water**

Type	Diesel
Make	Webasto
Model	5k
Fuel	Electric
Other remarks	Emersion water heater
Additional heating	3x Radiators plus towel rail

**In the bathroom**

Bath	--
Shower	--
Hip bath	--
Basin	--
Toilet type	Cassette
Toilet make	Thetford
Toilet model	CWE 250
Toilet tank capacity	--
Toilet remarks	Swivel Ceramic

**Electrical systems**

DC voltage	12v
No. of batteries (start)	1
No. of batteries (domestic)	3
Split charging	--
Other	2x Solar Panels- Victron WIFI Avtex 4G 3 x Domestic batteries 220ah AGM Victron Batteries

**240 volt electrical systems**

Inverter make	Victron- Combi
Inverter rating	--
Generator make	--
Generator rating	--
Shoreline	YES
Other	--





---

**Additional information**

Washing Machine- Zanussi Aqua Cycle 1300 New rear Titan canopy fitted on 24/03/2026 Roof box with 2 outdoor chairs Washing line Shopping Trolley 2 life jackets 3 x Toilet Cassettes

