



# Alice

Fenny Marina

£39,500.00

A 40ft 1980 Dartline 2 berth cruiser stern narrowboat.

Meet Alice, a beautifully compact and stylish narrowboat, perfect for small crews to seek their own wonderland on our stunning waterways.

Painted in a cheerful spring green livery with contrasting light grey pram hood and sides at the stern, Alice also benefitted from a fresh blacking in November 2025 and has a Boat Safety Certificate valid until July 2029.

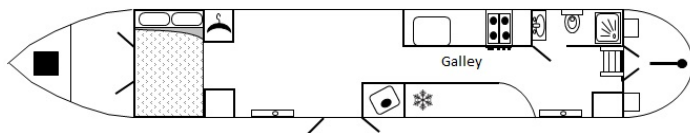
Enter through the stern door, on your left is a bathroom fitted with a shower, basin and cassette toilet.

Moving through the boat, the rest of the interior is open plan with a fresh rustic feel. The galley is equipped with a 4 burner hob, oven and grill, a Belfast style ceramic sink with mixer tap and an undercounter fridge. To the left there is a curved breakfast bar.

The saloon and sleeping area has a Morso Squirrel solid fuel stove, a good amount of space for the new owner to furnish as they wish, a chest of drawers and wardrobe. The front of the cabin in the photos is shown set up as a bed, but this can be reverted back to seating also. Doors above this area lead out onto a bow deck.

Alice has had some steel over plating work done, Base - 6mm, Hull sides 5mm, bow area 5mm and swim plates - 5mm.

To arrange a viewing, or for further information, please contact Fenny Marina on 01527 876438.



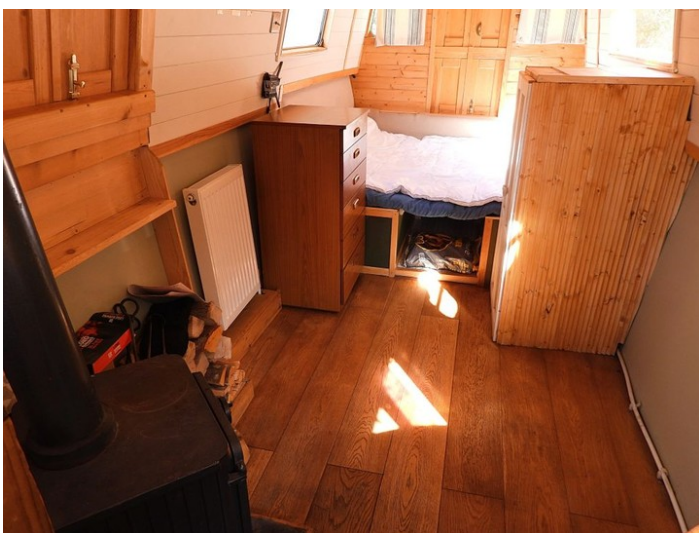
Overall length	40 feet
Beam	6 feet 10 inches
Draft	--
Headroom	6 feet
No. of berths	2
Style of stern	
BSS certificate expiry	--
Built	In 1980 by Dartline
Fitout	Previous Owner
Base	Steel 10
Hull	Steel 6
Cabin	Steel 4
Engine	Lister 25HP 3 Cylinder
Gearbox	Lister LH150

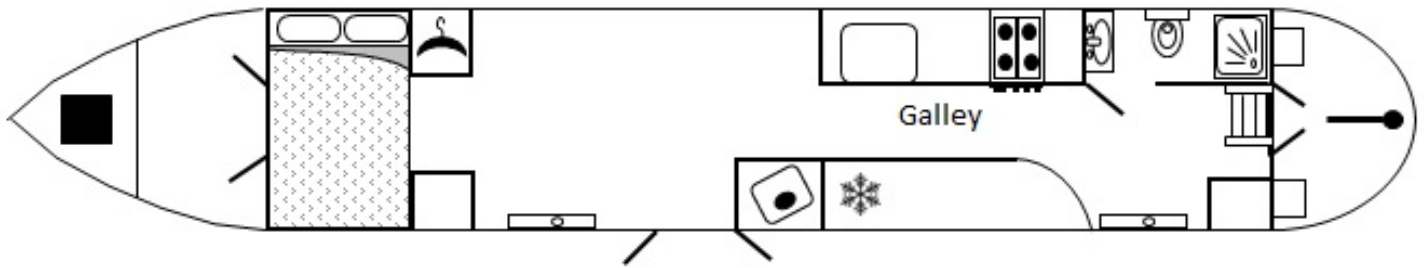




Scan the QR code to view online







**General**

## General

Name	Alice
BW index number	78721
Safety certificate	NO
BSS certificate expiry	--
BSS certificate number	BSSER-510763/25
Built	In 1980 by Dartline
Location	Fenny Marina
Price	£39,500.00

## Berths

No. of Berths	2
Double beds	--
Double beds (temp)	1
Single beds	--
Single beds (temp)	--

## Size

Overall length	40 feet
Overall beam	6 feet 10 inches
Overall draft	--
Style of stern	

**Structure**

## Manufacturer

Manufacturer	Dartline
Hull ID No.	--
Build date	1980

## Original steel thickness

Base	10
Hull	6
Cabin	4

## Anodes

Fitted	YES
Date fitted	--
Size	--
No. of anodes	--

## Material

Base	Steel
Hull	Steel
Cabin side	Steel
Roof	Steel

## Hull blacking

Last hull blacking	2025-11
Where	Middlewich Wharf



**Running gear****Engine**

Make	Lister
Model	25HP 3 Cylinder
Year	1980
Fuel	Diesel
Cooling	Skin Tank
Hours	--
Last serviced date	--
Last serviced by	--

**Gearbox**

Make	Lister
Model	LH150
Year	--
Reduction	--
Coupling	--
Shaft diameter	--
Propellor size	16"

**Capacities**

Fuel	--
Water	200Ltrs
Gas type	Propane

No. of gas cylinders	2
Gas cylinder size	13kg

**Interior****Fitted**

Fitted by	Previous Owner
Date fitted	--

**Materials used**

Floor	Wood
Hull sides	Painted Tongue and Groove
Cabin sides	Wooden painted
Deckhead	--
Bulkheads	Wooden to bathroom only
Fittings	--



**Equipment****In the galley**

Cooker type	Gas
Cooker model	Calor
Fridge type	Undercounter
Fridge model	Logik
Other	--

**Heating**

Type	Solid Fuel Stove
Make	Morso
Model	Squirrel
Fuel	Coal/Wood
Other remarks	--

**Hot water**

Type	Gas Boiler
Make	--
Model	--
Fuel	Gas
Other remarks	CO2 and smoke alarm fitted
Additional heating	Radiators are currently not plumbed in

**In the bathroom**

Bath	--
Shower	Yes
Hip bath	--
Basin	Yes
Toilet type	Cassette
Toilet make	Thetford
Toilet model	Porta Potti
Toilet tank capacity	--
Toilet remarks	--

**Electrical systems**

DC voltage	12v
No. of batteries (start)	1
No. of batteries (domestic)	4
Split charging	True
Other	2x Solar panels

**240 volt electrical systems**

Inverter make	Victron
Inverter rating	--
Generator make	--
Generator rating	--
Shoreline	YES
Other	--

**Additional information**

--

